

## Recombinant Guinea pig Ins protein, His & SUMO-tagged

**Cat. No.** Ins-1783G    **Lot. No.** (See product label)

### SPECIFICATION

<b>Product Overview</b>	Recombinant Guinea pig Ins aa. (Phe25~Asn110) fused with N-terminal His & SUMO tag was produced in E. coli cells.
<b>Species</b>	Guinea pig
<b>Source</b>	E.coli
<b>ProteinLength</b>	Phe25~Asn110
<b>Form</b>	Freeze-dried powder
<b>Molecular Mass</b>	20kDa as determined by SDS-PAGE reducing conditions.
<b>Endotoxin</b>	<1.0EU per 1ug (determined by the LAL method)
<b>Purity</b>	>95%
<b>Applications</b>	Positive Control; Immunogen; SDS-PAGE; WB.
<b>Stability</b>	The thermal stability is described by the loss rate. The loss rate was determined by accelerated thermal degradation test, that is, incubate the protein at 37°C for 48h, and no obvious degradation and precipitation were observed. The loss rate is less than 5% within the expiration date under appropriate storage condition.
<b>Storage</b>	Avoid repeated freeze/thaw cycles. Store at 2-8°C for one month. Aliquot and store at

 Tel: 1-631-559-9269    1-516-512-3133

 Email: [info@creative-biomart.com](mailto:info@creative-biomart.com)     Fax: 1-631-938-8127

 45-1 Ramsey Road, Shirley, NY 11967, USA

-80°C for 12 months.

**Concentration** 200µg/mL

**Storage buffer** 20mM Tris, 150mM NaCl, pH8.0, containing 1mM EDTA, 1mM DTT, 0.01% sarcosyl, 5%Trehalose and Proclin300.

**Reconstitution** Reconstitute in 20mM Tris, 150mM NaCl (pH8.0) to a concentration of 0.1-1.0 mg/mL. Do not vortex.

**Isoelectric Point** 4.9

## GENE INFORMATION

**Gene Name** [Ins insulin \[ Cavia porcellus \(domestic guinea pig\) \]](#)

**Official Symbol** [Ins](#)

**Synonyms** Ins; insulin; preproinsulin

**Gene ID** [100379579](#)

**mRNA Refseq** [NM\\_001172891.1](#)

**Protein Refseq** [NP\\_001166362.1](#)

**UniProt ID** [P01329](#)

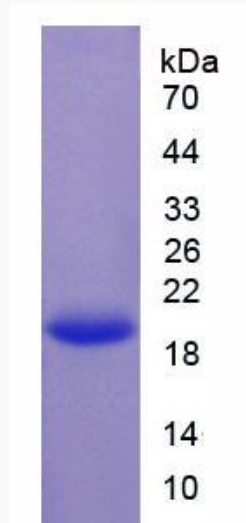
 Tel: 1-631-559-9269 1-516-512-3133

 Email: [info@creative-biomart.com](mailto:info@creative-biomart.com)  Fax: 1-631-938-8127

 45-1 Ramsey Road, Shirley, NY 11967, USA



SDS-PAGE



Tel: 1-631-559-9269 1-516-512-3133

Email: [info@creative-biomart.com](mailto:info@creative-biomart.com) Fax: 1-631-938-8127

45-1 Ramsey Road, Shirley, NY 11967, USA