

## Recombinant Mouse Ins2 Protein, His tagged

**Cat. No.** Ins2-011M    **Lot. No.** (See product label)

### SPECIFICATION

<b>Product Overview</b>	Recombinant Mouse Insulin-2 is produced by <i>Pichia pastoris</i> . The target gene encoding F25-N110 is expressed with a 6xHis tag at the C-terminus.
<b>Species</b>	Mouse
<b>Source</b>	Yeast
<b>ProteinLength</b>	25-110 aa
<b>Description</b>	This gene encodes insulin, a peptide hormone that plays a vital role in the regulation of carbohydrate and lipid metabolism. The encoded precursor protein undergoes proteolytic cleavage to produce a disulfide-linked heterodimeric functional protein that is stored in secretory granules. An increase in blood glucose levels, among others, induces the release of insulin from the secretory granules. Mice deficient in the functional hormone encoded by this gene develop diabetes mellitus. Alternative splicing results in multiple transcript variants.
<b>Form</b>	Supplied as a 0.2 µm filtered solution of PBS, pH 7.4
<b>Molecular Mass</b>	10.5 kDa
<b>Endotoxin</b>	Less than 0.1 ng/µg (1 EU/µg) as determined by TAL test.
<b>Purity</b>	Greater than 95% as determined by reducing SDS-PAGE.

 Tel: 1-631-559-9269    1-516-512-3133

 Email: [info@creative-biomart.com](mailto:info@creative-biomart.com)     Fax: 1-631-938-8127

 45-1 Ramsey Road, Shirley, NY 11967, USA

**Storage** Store at ≤-70 centigrade, stable for 6 months after receipt. Store at ≤-70 centigrade, stable for 3 months under sterile conditions after opening. Please minimize freeze-thaw cycles.

**Shipping** The product is shipped on dry ice pack.

## GENE INFORMATION

**Gene Name** [Ins2 insulin II \[ Mus musculus \(house mouse\) \]](#)

**Official Symbol** [Ins2](#)

**Synonyms** [Ins2](#); [insulin II](#); [Mody](#); [Ins-2](#); [InsII](#); [Mody4](#); [insulin-2](#); [proinsulin](#)

**Gene ID** [16334](#)

**mRNA Refseq** [NM\\_008387](#)

**Protein Refseq** [NP\\_032413](#)

**UniProt ID** [P01326](#)

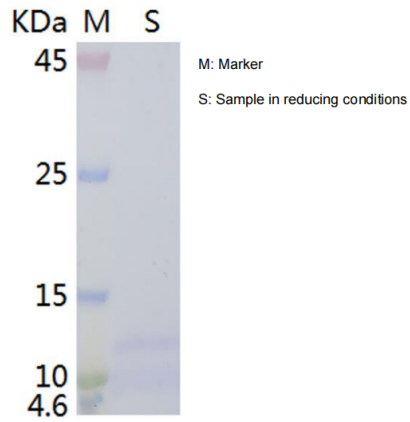
 Tel: 1-631-559-9269 1-516-512-3133

 Email: [info@creative-biomart.com](mailto:info@creative-biomart.com)  Fax: 1-631-938-8127

 45-1 Ramsey Road, Shirley, NY 11967, USA



SDS-PAGE



Tel: 1-631-559-9269 1-516-512-3133

Email: [info@creative-biomart.com](mailto:info@creative-biomart.com) Fax: 1-631-938-8127

45-1 Ramsey Road, Shirley, NY 11967, USA