

Recombinant Mouse InsI3 protein, His-GST-tagged

Cat. No. InsI3-102M Lot. No. (See product label)

SPECIFICATION

Product Overview	Recombinant Mouse InsI3 protein(Leu16~His122), fused with N-terminal His and GST tag, was expressed in E. coli.
Species	Mouse
Source	N-His-GST
ProteinLength	Leu16~His122
Tag	N-His-GST
Form	PBS, pH7.4, containing 0.01% SKL, 5% Trehalose.
Molecular Mass	42kDa
Endotoxin	<1.0EU per 1µg (determined by the LAL method).
Purity	> 95%
Storage	Avoid repeated freeze/thaw cycles. Store at 2-8°C for one month. Aliquot and store at -80°C for 12 months.
Reconstitution	Reconstitute in 10mM PBS (pH7.4) to a concentration of 0.1-1.0 mg/mL. Do not vortex.

 Tel: 1-631-559-9269 1-516-512-3133

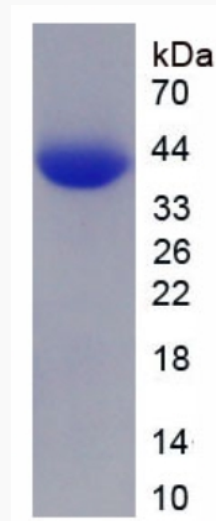
 Email: info@creative-biomart.com  Fax: 1-631-938-8127

 45-1 Ramsey Road, Shirley, NY 11967, USA

GENE INFORMATION

Gene Name	Insl3 insulin-like 3 [<i>Mus musculus</i> (house mouse)]
Official Symbol	Insl3
Synonyms	INSL3; insulin-like 3; Ley I-L; ley-I-L; relaxin like factor; relaxin-like factor; leydig insulin-like peptide; Rlf; Rlnl
Gene ID	16336
mRNA Refseq	NM_013564
Protein Refseq	NP_038592
UniProt ID	Q5RL10

SDS-PAGE



 Tel: 1-631-559-9269 1-516-512-3133

 Email: info@creative-biomart.com  Fax: 1-631-938-8127

 45-1 Ramsey Road, Shirley, NY 11967, USA