

## Recombinant Mouse InsI3 protein, His-TRxA-tagged

Cat. No. InsI3-103M Lot. No. (See product label)

### SPECIFICATION

<b>Product Overview</b>	Recombinant Mouse InsI3 protein(Leu16~His122), fused with N-terminal His and TRxA tag, was expressed in E. coli.
<b>Species</b>	Mouse
<b>Source</b>	N-His-TRxA
<b>ProteinLength</b>	Leu16~His122
<b>Tag</b>	N-His-TRxA
<b>Form</b>	PBS, pH7.4, containing 0.01% SKL, 5% Trehalose.
<b>Molecular Mass</b>	33kDa
<b>Endotoxin</b>	<1.0EU per 1µg (determined by the LAL method).
<b>Purity</b>	> 90%
<b>Storage</b>	Avoid repeated freeze/thaw cycles. Store at 2-8°C for one month. Aliquot and store at -80°C for 12 months.
<b>Reconstitution</b>	Reconstitute in 10mM PBS (pH7.4) to a concentration of 0.1-1.0 mg/mL. Do not vortex.

 Tel: 1-631-559-9269 1-516-512-3133

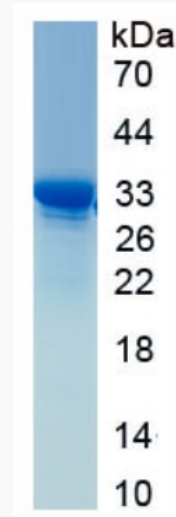
 Email: [info@creative-biomart.com](mailto:info@creative-biomart.com)  Fax: 1-631-938-8127

 45-1 Ramsey Road, Shirley, NY 11967, USA

## GENE INFORMATION

<b>Gene Name</b>	Insl3 insulin-like 3 [ <i>Mus musculus</i> (house mouse) ]
<b>Official Symbol</b>	<a href="#">Insl3</a>
<b>Synonyms</b>	INSL3; insulin-like 3; Ley I-L; ley-I-L; relaxin like factor; relaxin-like factor; leydig insulin-like peptide; Rlf; Rlnl
<b>Gene ID</b>	<a href="#">16336</a>
<b>mRNA Refseq</b>	<a href="#">NM_013564</a>
<b>Protein Refseq</b>	<a href="#">NP_038592</a>
<b>UniProt ID</b>	<a href="#">Q5RL10</a>

### SDS-PAGE



 Tel: 1-631-559-9269 1-516-512-3133

 Email: [info@creative-biomart.com](mailto:info@creative-biomart.com)  Fax: 1-631-938-8127

 45-1 Ramsey Road, Shirley, NY 11967, USA