

Recombinant Rat Insl3 Protein, His&SUMO-tagged

Cat. No. Insl3-1062R **Lot. No.** (See product label)

SPECIFICATION

Product Overview	Recombinant Rat Insl3 Protein (Gln63-His128) with His&SUMO tag was expressed in E. coli.
Species	Rat
Source	E.coli
ProteinLength	Gln63-His128
Description	Enables G protein-coupled receptor binding activity. Involved in several processes, including male gonad development; oocyte maturation; and positive regulation of cAMP-mediated signaling. Located in extracellular space and perinuclear region of cytoplasm. Human ortholog(s) of this gene implicated in cryptorchidism. Orthologous to human INSL3 (insulin like 3).
Form	Freeze-dried powder
Molecular Mass	Predicted Molecular Mass: 21.1 kDa; Accurate Molecular Mass: \
Purity	> 90%
Applications	Positive Control; Immunogen; SDS-PAGE; WB.
Stability	The thermal stability is described by the loss rate. The loss rate was determined by accelerated thermal degradation test, that is, incubate the protein at 37 centigrade for

 Tel: 1-631-559-9269 1-516-512-3133

 Email: info@creative-biomart.com  Fax: 1-631-938-8127

 45-1 Ramsey Road, Shirley, NY 11967, USA

48h, and no obvious degradation and precipitation were observed. The loss rate is less than 5% within the expiration date under appropriate storage condition.

Storage

Avoid repeated freeze/thaw cycles. Store at 2-8 centigrade for one month. Aliquot and store at -80 centigrade for 12 months.

Storage Buffer

20mM Tris, 150mM NaCl, pH8.0, containing 1mM EDTA, 1mM DTT, 0.01% SKL, 5% Trehalose and Proclin300.

Reconstitution

Reconstitute in 20mM Tris, 150mM NaCl (pH8.0) to a concentration of 0.1-1.0 mg/mL. Do not vortex.

GENE INFORMATION

Gene Name

[Insl3 insulin-like 3 \[Rattus norvegicus \(Norway rat\) \]](#)

Official Symbol

[Insl3](#)

Synonyms

INSL3; insulin-like 3; ley-I-L; relaxin-like factor; Leydig insulin-like peptide relaxin-like factor; Rlf; MGC112595;

Gene ID

[114215](#)

mRNA Refseq

[NM_053680](#)

Protein Refseq

[NP_446132](#)

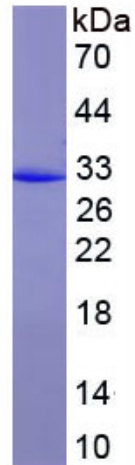
UniProt ID

[Q9WUK0](#)

 Tel: 1-631-559-9269 1-516-512-3133

 Email: info@creative-biomart.com  Fax: 1-631-938-8127

 45-1 Ramsey Road, Shirley, NY 11967, USA



Tel: 1-631-559-9269 1-516-512-3133

Email: info@creative-biomart.com Fax: 1-631-938-8127

45-1 Ramsey Road, Shirley, NY 11967, USA