

Recombinant Mouse Ipo8 Protein, His/GST-tagged

Cat. No. Ipo8-199M Lot. No. (See product label)

SPECIFICATION

| | |
|-------------------------|---|
| Product Overview | Recombinant Mouse Ipo8(Tyr417~Val622) fused with His/GST tag at N-terminal was expressed in E. coli. |
| Species | Mouse |
| Source | E.coli |
| ProteinLength | Tyr417~Val622 |
| Description | IPO8 played an important role in many functions. |
| Form | PBS, pH7.4, containing 0.01% SKL, 1mM DTT, 5% Trehalose and Proclin300. |
| Molecular Mass | 55.9kDa |
| Identity | Reconstitute in PBS or others |
| Endotoxin | <1.0EU per 1g (determined by the LAL method) |
| Purity | > 95% |
| Applications | Positive Control; Immunogen; SDS-PAGE; WB. If bio-activity of the protein is needed, please check active protein |
| Stability | The thermal stability is described by the loss rate. The loss rate was determined by |

 Tel: 1-631-559-9269 1-516-512-3133

 Email: info@creative-biomart.com  Fax: 1-631-938-8127

 45-1 Ramsey Road, Shirley, NY 11967, USA

accelerated thermal degradation test, that is, incubate the protein at 37 centigrade for 48h, and no obvious degradation and precipitation were observed. The loss rate is less than 5% within the expiration date under appropriate storage condition.

Storage

Avoid repeated freeze/thaw cycles. Store at 2-8 centigrade for one month. Aliquot and store at -80 centigrade for 12 months.

Reconstitution

Reconstitute in PBS or others

GENE INFORMATION

Gene Name

[Ipo8 importin 8 \[Mus musculus \]](#)

Official Symbol

[IPO8](#)

Synonyms

IPO8; importin 8; importin-8; imp8; oocyte maturation 1; ran-binding protein 8; ATP-binding cassette, sub-family C (CFTR/MRP), member 10; Om1; MRP7; OM-1; Abcc10; Ranbp8; 6230418K12Rik; C130009K11Rik;

Gene ID

[320727](#)

mRNA Refseq

[NM_001081113](#)

Protein Refseq

[NP_001074582](#)

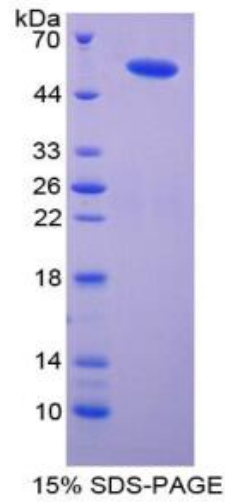
UniProt ID

[Q7TMY7](#)

 Tel: 1-631-559-9269 1-516-512-3133

 Email: info@creative-biomart.com  Fax: 1-631-938-8127

 45-1 Ramsey Road, Shirley, NY 11967, USA



 Tel: 1-631-559-9269 1-516-512-3133

 Email: info@creative-biomart.com  Fax: 1-631-938-8127

 45-1 Ramsey Road, Shirley, NY 11967, USA