

Recombinant Mouse Iqgap1 protein, His & T7-tagged

Cat. No. Iqgap1-1190M Lot. No. (See product label)

SPECIFICATION

Product Overview	Recombinant Mouse Iqgap1 aa. (Gln1276~Lys1657 (Accession # Q9JKF1) fused with N-terminal His & T7 tag was produced in E. coli cells.
Species	Mouse
Source	E.coli
ProteinLength	Gln1276~Lys1657
Form	Freeze-dried powder
Molecular Mass	58kDa as determined by SDS-PAGE reducing conditions.
Endotoxin	<1.0EU per 1g (determined by the LAL method)
Purity	>90%
Characteristic	The isoelectric point is 7.8.
Applications	SDS-PAGE; WB; ELISA; IP.
Stability	The thermal stability is described by the loss rate of the target protein. The loss rate was determined by accelerated thermal degradation test, that is, incubate the protein at 37°C for 48h, and no obvious degradation and precipitation were observed. (Referring from China Biological Products Standard, which was calculated by the

 Tel: 1-631-559-9269 1-516-512-3133

 Email: info@creative-biomart.com  Fax: 1-631-938-8127

 45-1 Ramsey Road, Shirley, NY 11967, USA

Arrhenius equation.) The loss of this protein is less than 5% within the expiration date under appropriate storage condition.

Storage

Avoid repeated freeze/thaw cycles. Store at 2-8°C for one month. Aliquot and store at -80°C for 12 months.

Storage buffer

Supplied as lyophilized form in PBS, pH7.4, containing 5% trehalose, 0.01% sarcosyl.

Reconstitution

Reconstitute in sterile PBS, pH7.2-pH7.4.

GENE INFORMATION

Gene Name

[lqgap1 IQ motif containing GTPase activating protein 1 \[Mus musculus \(house mouse\) \]](#)

Official Symbol

[lqgap1](#)

Synonyms

[lqgap1](#); [IQ motif containing GTPase activating protein 1](#); [AA682088](#); [mKIAA0051](#); [D7Erttd237e](#); [D7Erttd257e](#); [ras GTPase-activating-like protein IQGAP1](#); [Cdc42-Rac1 effector protein](#)

Gene ID

[29875](#)

mRNA Refseq

[NM_016721.2](#)

Protein Refseq

[NP_057930.2](#)

UniProt ID

[Q9JKF1](#)

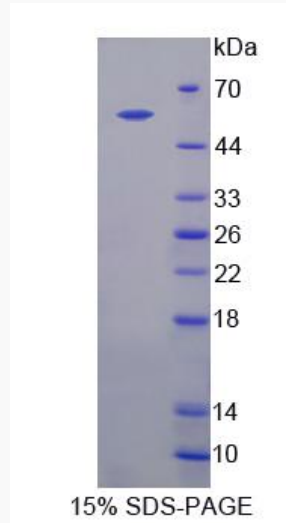
 Tel: 1-631-559-9269 1-516-512-3133

 Email: info@creative-biomart.com  Fax: 1-631-938-8127

 45-1 Ramsey Road, Shirley, NY 11967, USA



SDS-PAGE



Tel: 1-631-559-9269 1-516-512-3133

Email: info@creative-biomart.com Fax: 1-631-938-8127

45-1 Ramsey Road, Shirley, NY 11967, USA