

## Recombinant Mouse Isg15 protein, His-tagged

Cat. No. Isg15-1868M Lot. No. (See product label)

### SPECIFICATION

<b>Product Overview</b>	Recombinant Mouse Isg15 aa. (Ala2~Ala161) fused with N-terminal His tag was produced in E. coli cells.
<b>Species</b>	Mouse
<b>Source</b>	E.coli
<b>ProteinLength</b>	Ala2~Ala161
<b>Source</b>	E. coli
<b>Species</b>	Mouse
<b>Tag</b>	His
<b>Form</b>	Freeze-dried powder
<b>Molecular Mass</b>	22kDa as determined by SDS-PAGE reducing conditions.
<b>Endotoxin</b>	<1.0EU per 1ug (determined by the LAL method)
<b>Purity</b>	>97%
<b>Applications</b>	Positive Control; Immunogen; SDS-PAGE; WB.

 Tel: 1-631-559-9269 1-516-512-3133

 Email: [info@creative-biomart.com](mailto:info@creative-biomart.com)  Fax: 1-631-938-8127

 45-1 Ramsey Road, Shirley, NY 11967, USA

<b>Stability</b>	The thermal stability is described by the loss rate. The loss rate was determined by accelerated thermal degradation test, that is, incubate the protein at 37°C for 48h, and no obvious degradation and precipitation were observed. The loss rate is less than 5% within the expiration date under appropriate storage condition.
<b>Storage</b>	Avoid repeated freeze/thaw cycles. Store at 2-8°C for one month. Aliquot and store at -80°C for 12 months.
<b>Concentration</b>	200µg/mL
<b>Storage buffer</b>	100mMNaHCO <sub>3</sub> , 500mMNaCl, pH8.3, containing 1mM EDTA, 1mM DTT, 0.01% SKL, 5% Trehalose and Proclin300.
<b>Reconstitution</b>	Reconstitute in 100mM NaHCO <sub>3</sub> , 500mM NaCl (pH8.3) to a concentration of 0.1-1.0 mg/mL. Do not vortex.
<b>Isoelectric Point</b>	7.9

## GENE INFORMATION

<b>Gene Name</b>	<a href="#">lsg15 ISG15 ubiquitin-like modifier [ Mus musculus (house mouse) ]</a>
<b>Official Symbol</b>	<a href="#">lsg15</a>
<b>Synonyms</b>	lsg15; ISG15 ubiquitin-like modifier; G1p2; IP17; Irfp; UCRP; IGI15; ubiquitin-like protein ISG15; interferon, alpha-inducible protein; interferon-induced 15 kDa protein; interferon-induced 15-KDa protein; interferon-induced 17 kDa protein; interferon-stimulated protein (15 kDa); interferon-stimulated protein 15; ubiquitin cross-reactive protein
<b>Gene ID</b>	<a href="#">100038882</a>

 Tel: 1-631-559-9269 1-516-512-3133

 Email: [info@creative-biomart.com](mailto:info@creative-biomart.com)  Fax: 1-631-938-8127

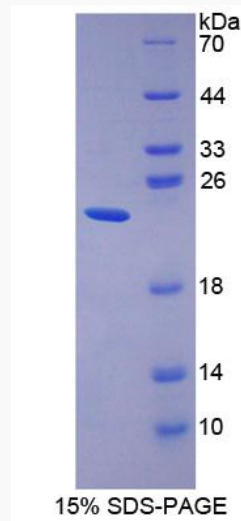
 45-1 Ramsey Road, Shirley, NY 11967, USA

mRNA Refseq [NM\\_015783.3](#)

Protein Refseq [NP\\_056598.2](#)

UniProt ID [Q64339](#)

**SDS-PAGE**



 Tel: 1-631-559-9269 1-516-512-3133

 Email: [info@creative-biomart.com](mailto:info@creative-biomart.com)  Fax: 1-631-938-8127

 45-1 Ramsey Road, Shirley, NY 11967, USA