

Recombinant Mouse Isg15 protein, His-tagged

Cat. No. Isg15-4633M **Lot. No.** (See product label)

SPECIFICATION

Product Overview	Recombinant Mouse Isg15 protein(Q64339)(1-155aa), fused with C-terminal His tag, was expressed in HEK293.
Species	Mouse
Source	HEK293
ProteinLength	1-155aa
Tag	C-His
Form	If the delivery form is liquid, the default storage buffer is Tris/PBS-based buffer, 5%-50% glycerol. If the delivery form is lyophilized powder, the buffer before lyophilization is Tris/PBS-based buffer, 6% Trehalose, pH 8.0.
Molecular Mass	19.2 kDa
Purity	Greater than 85% as determined by SDS-PAGE.
Storage	Store at -20°C/-80°C upon receipt, aliquoting is necessary for mutiple use. Avoid repeated freeze-thaw cycles.
Reconstitution	We recommend that this vial be briefly centrifuged prior to opening to bring the contents to the bottom. Please reconstitute protein in deionized sterile water to a concentration of 0.1-1.0 mg/mL. We recommend to add 5-50% of glycerol (final

 Tel: 1-631-559-9269 1-516-512-3133

 Email: info@creative-biomart.com  Fax: 1-631-938-8127

 45-1 Ramsey Road, Shirley, NY 11967, USA

concentration) and aliquot for long-term storage at -20°C/-80°C.

AA Sequence

MAWDLKVKMLGGNDLVSVTNSMTVSELKKQIAQKIGVPAFQQRLAHQTAVLQDGL
 TLSSLGLGPSSTVMLVVQNCSEPLSILVRNERGHSNIYEVFLTQTVDLTKKKVSQRE
 QVHEDQFWLSFEGRPMEDEKELLGEYGLKPQCTVIKHLRLRGG

GENE INFORMATION

Gene Name

[lsg15 ISG15 ubiquitin-like modifier \[Mus musculus \]](#)

Official Symbol

[lsg15](#)

Synonyms

ISG15; ISG15 ubiquitin-like modifier; ubiquitin-like protein ISG15; interferon-stimulated protein 15; ubiquitin cross-reactive protein; interferon-induced 15 kDa protein; interferon-induced 15-KDa protein; interferon-induced 17 kDa protein; interferon, alpha-inducible protein; interferon-stimulated protein (15 kDa); G1p2; IP17; Irfp; UCRP; IGI15; MGC18616; MGC103144; MGC130321;

Gene ID

[100038882](#)

mRNA Refseq

[NM_015783](#)

Protein Refseq

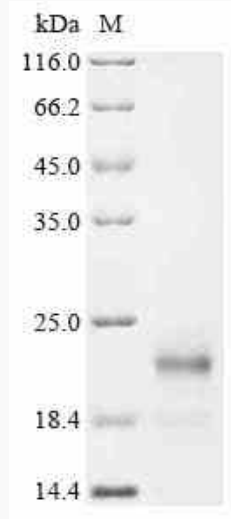
[NP_056598](#)

 Tel: 1-631-559-9269 1-516-512-3133

 Email: info@creative-biomart.com  Fax: 1-631-938-8127

 45-1 Ramsey Road, Shirley, NY 11967, USA

SDS-PAGE



 Tel: 1-631-559-9269 1-516-512-3133

 Email: info@creative-biomart.com  Fax: 1-631-938-8127

 45-1 Ramsey Road, Shirley, NY 11967, USA