

## Recombinant Mouse Itgb6 protein, His-tagged

**Cat. No.** Itgb6-7553M    **Lot. No.** (See product label)

### SPECIFICATION

|                         |   |
|-------------------------|---|
| <b>Product Overview</b> | Recombinant Mouse Itgb6 protein(Q9Z0T9)(Gly22-Asn706), fused with C-terminal His tag, was expressed in HEK293.  |
| <b>Species</b>          | Mouse   |
| <b>Source</b>           | HEK293  |
| <b>ProteinLength</b>    | Gly22-Asn706  |
| <b>Tag</b>              | C-His   |
| <b>Form</b>             | Supplied as 0.22µm filtered solution in PBS (pH 7.4).   |
| <b>Molecular Mass</b>   | The protein has a predicted MW of 75.7 kDa. Due to glycosylation, the protein migrates to 80-115 kDa based on Tris-Bis PAGE result.   |
| <b>Endotoxin</b>        | Less than 1EU per µg by the LAL method.   |
| <b>Purity</b>           | > 95% as determined by Tris-Bis PAGE; > 95% as determined by HPLC   |
| <b>Storage</b>          | Valid for 12 months from date of receipt when stored at -80°C; Recommend to aliquot the protein into smaller quantities for optimal storage. Please do not repeated freeze-thaw cycles. |
| <b>Reconstitution</b>   | It is recommended that sterile water be added to the vial to prepare a stock solution of  |

 Tel: 1-631-559-9269    1-516-512-3133

 Email: [info@creative-biomart.com](mailto:info@creative-biomart.com)     Fax: 1-631-938-8127

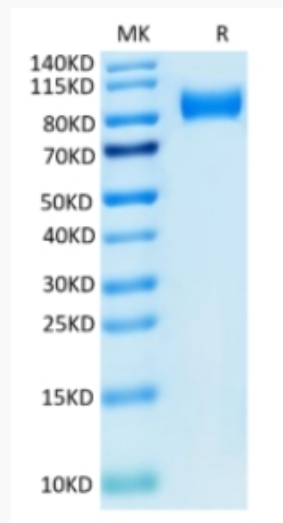
 45-1 Ramsey Road, Shirley, NY 11967, USA

0.2 ug/ul. Centrifuge the vial at 4°C before opening to recover the entire contents.

## GENE INFORMATION

|                 |  |
|-----------------|--|
| Gene Name       | <a href="#">Itgb6 integrin beta 6 [ Mus musculus ]</a>                 |
| Official Symbol | <a href="#">Itgb6</a>  |
| Synonyms        | ITGB6; integrin beta 6; integrin beta-6; 2210409C20Rik; 4831415H04Rik; |
| Gene ID         | <a href="#">16420</a>  |
| mRNA Refseq     | <a href="#">NM_001159564</a>   |
| Protein Refseq  | <a href="#">NP_001153036</a>   |

### Tris-Bis PAGE



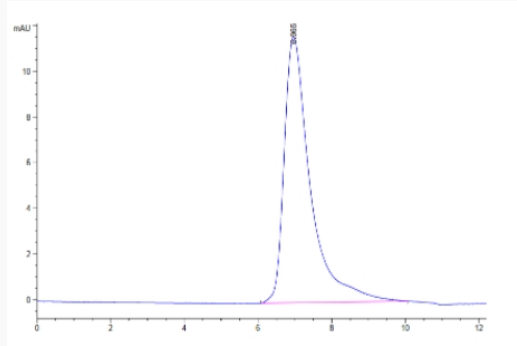
Tel: 1-631-559-9269 1-516-512-3133

Email: [info@creative-biomart.com](mailto:info@creative-biomart.com) Fax: 1-631-938-8127

45-1 Ramsey Road, Shirley, NY 11967, USA



**SEC-HPLC**



Tel: 1-631-559-9269 1-516-512-3133

Email: [info@creative-biomart.com](mailto:info@creative-biomart.com) Fax: 1-631-938-8127

45-1 Ramsey Road, Shirley, NY 11967, USA