

Recombinant Mouse Itln1 protein, His-tagged

Cat. No. Itln1-5637M **Lot. No.** (See product label)

SPECIFICATION

Product Overview	Recombinant Mouse Itln1 aa. (Arg28~Gly270) fused with N-terminal His tag was produced in E. coli cells.
Species	Mouse
Source	E.coli
ProteinLength	Arg28~Gly270
Form	Freeze-dried powder
Molecular Mass	30kDa as determined by SDS-PAGE reducing conditions.
Endotoxin	<1.0EU per 1g (determined by the LAL method)
Purity	>95%
Characteristic	The isoelectric point is 8.8.
Applications	SDS-PAGE; WB; ELISA; IP; CoIP; Reporter Assays; Purification; Amine Reactive Labeling.
Stability	The thermal stability is described by the loss rate. The loss rate was determined by accelerated thermal degradation test, that is, incubate the protein at 37°C for 48h, and no obvious degradation and precipitation were observed. The loss rate is less

 Tel: 1-631-559-9269 1-516-512-3133

 Email: info@creative-biomart.com  Fax: 1-631-938-8127

 45-1 Ramsey Road, Shirley, NY 11967, USA

than 5% within the expiration date under appropriate storage condition.

Storage

Avoid repeated freeze/thaw cycles. Store at 2-8°C for one month. Aliquot and store at -80°C for 12 months.

Concentration

200µg/mL

Storage buffer

PBS, pH7.4, containing 1mM DTT, 5% trehalose, 0.01% sarcosyl and Proclin300.

Reconstitution

Reconstitute in PBS (pH7.4) to a concentration of 0.1-1.0 mg/mL. Do not vortex.

GENE INFORMATION

Gene Name

[Itln1](#) [intelectin 1 \(galactofuranose binding\)](#) [[Mus musculus \(house mouse\)](#)]

Official Symbol

[Itln1](#)

Synonyms

[Itln1](#); [intelectin 1 \(galactofuranose binding\)](#); [Lfr](#); [IntL](#); [Itln](#); [Itln2](#); [Itln3](#); [Itln5](#); [Itlna](#); [intelectin-1a](#); [calcium-dependent galactosyl-specific lectin](#); [galactofuranose-binding lectin](#); [intelectin 2](#); [intelectin 5](#); [intelectin a](#); [intestinal lactoferrin receptor](#); [truncated intelectin 3](#)

Gene ID

[16429](#)

mRNA Refseq

[NM_010584.3](#)

Protein Refseq

[NP_034714.1](#)

UniProt ID

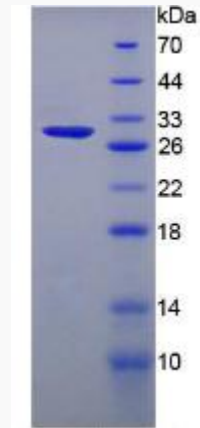
[O88310](#)

 Tel: 1-631-559-9269 1-516-512-3133

 Email: info@creative-biomart.com  Fax: 1-631-938-8127

 45-1 Ramsey Road, Shirley, NY 11967, USA

SDS-PAGE



 Tel: 1-631-559-9269 1-516-512-3133

 Email: info@creative-biomart.com  Fax: 1-631-938-8127

 45-1 Ramsey Road, Shirley, NY 11967, USA