

## Recombinant Human JAK2 (E596A, V617F, W659A, W777A, F794H) Protein, His tagged

Cat. No. JAK2-32H Lot. No. (See product label)

### SPECIFICATION

<b>Product Overview</b>	Recombinant Human JAK2 (JH2 Domain) (E596A, V617F, W659A, W777A, F794H) Protein with His tag was expressed in Insect Cells.
<b>Species</b>	Human
<b>Source</b>	Insect Cells
<b>ProteinLength</b>	536-812 aa (E596A, V617F, W659A, W777A, F794H)
<b>Form</b>	Sterile 50mM Tris, pH8.0, 200mM NaCl, 10% Glycerol, 2mM DTT
<b>Molecular Mass</b>	32 kDa
<b>AASequence</b>	MVFHKIRNEDLIFNESLGQGTFTKIFKGVRRREVG DYGQLHETEVL LKVLDKAHRNYS ESFFAAASMM SKLSHKHLV LNYGVCFCGDENILVQEFVKFGSLDTYLKKNKNCINIL WKLEVAKQLAAAMHFLEENTLIHGNVCAKNILLIREEDRKTGNPPFIKLSDPGISITVLP KDILQERIPWVPECIENPKNLNLATDKWSFGTTLWEICSGGDKPLSALDSQRKLQF YEDRHQLPAPKAAELANLINN CMDYEPDHRPSFRAIIRDNLNSLFTPDHHHHHH
<b>Endotoxin</b>	< 1 EU/μg by LAL
<b>Purity</b>	>90% by SDS-PAGE
<b>Storage</b>	Store it under sterile conditions at -20 to -80 centigrade. It is recommended that the

 Tel: 1-631-559-9269 1-516-512-3133

 Email: [info@creative-biomart.com](mailto:info@creative-biomart.com)  Fax: 1-631-938-8127

 45-1 Ramsey Road, Shirley, NY 11967, USA



protein be aliquoted for optimal storage. Avoid repeated freeze-thaw cycles.

**Concentration** 0.36 mg/mL by Bradford

## GENE INFORMATION

**Gene Name** JAK2 Janus kinase 2 [ Homo sapiens (human) ]

**Official Symbol** JAK2

**Synonyms** JAK2; Janus kinase 2; tyrosine-protein kinase JAK2; JTK10; JAK-2; Janus kinase 2 (a protein tyrosine kinase); THCYT3

**Gene ID** 3717

**mRNA Refseq** NM\_004972

**Protein Refseq** NP\_004963

**MIM** 147796

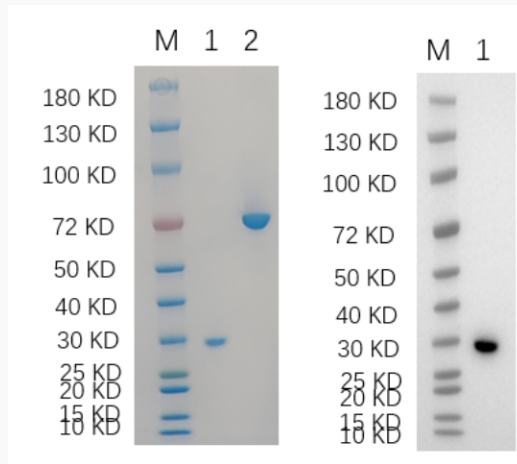
**UniProt ID** O60674

 Tel: 1-631-559-9269 1-516-512-3133

 Email: [info@creative-biomart.com](mailto:info@creative-biomart.com)  Fax: 1-631-938-8127

 45-1 Ramsey Road, Shirley, NY 11967, USA

**SDS-PAGE and WB**



Reducing 4%-20% SDS-PAGE (CBB stained) and WB (Anti-His Mouse Monoclonal Antibody) analysis profiles of purified JAK2. 1. JAK2 2. BSA

 Tel: 1-631-559-9269 1-516-512-3133

 Email: [info@creative-biomart.com](mailto:info@creative-biomart.com)  Fax: 1-631-938-8127

 45-1 Ramsey Road, Shirley, NY 11967, USA