

Recombinant Human JMJD5 protein, His-tagged

Cat. No. JMJD5-206H Lot. No. (See product label)

SPECIFICATION

Product Overview	Recombinant Human JMJD5 Protein(NP_001138820.1)(238-416 aa) is expressed from E. coli with a His Tag.
Species	Human
Source	E.coli
ProteinLength	238-416 aa
Description	This gene likely encodes a histone lysine demethylase. Studies of a similar protein in mouse indicate a potential role for this protein as a tumor suppressor. Alternatively spliced transcript variants have been described.
Form	The purified protein was Lyophilized from sterile PBS (58mM Na ₂ HPO ₄ , 17mM NaH ₂ PO ₄ , 68mM NaCl, pH7.4), 5% trehalose and 5% mannitol are added as protectants before lyophilization.
Bio-activity	Not tested
AA Sequence	EVGSRYTDEEWSQTLMTVNEFISKYIVNEPRDVGYLEAQHQLFDQIPELKQDISIPDYC SLGDGEEEEITINAWFGPQGTISPLHQDPQQNFLVQVMGRKYIRLYSPQESGALYPH DTHLLHNTSQVDVENPDLEKFPKFAKAPFLSCILSPGEILFIPVKYWHYVRALDLSFSV SFWWS
Endotoxin	<1.0 EU per µg protein as determined by the LAL method.

 Tel: 1-631-559-9269 1-516-512-3133

 Email: info@creative-biomart.com  Fax: 1-631-938-8127

 45-1 Ramsey Road, Shirley, NY 11967, USA

Purity	95%, by SDS-PAGE with Coomassie Brilliant Blue staining.
Applications	Blocking peptide
Stability	Store for up to 12 months at -20°C to -80°C as lyophilized powder.
Storage	Short-term storage: Store at 2-8°C for (1-2 weeks). Long-term storage: Aliquot and store at -20°C to -80°C for up to 3 months, buffer containing 50% glycerol is recommended for reconstitution. Avoid repeat freeze-thaw cycles.
Reconstitution	<p>Reconstitute at 0.25 g/μl in 200 μl sterile water for short-term storage.</p> <p>Reconstitution with 200 μl 50% glycerol solution is recommended for longer term storage (see Stability and Storage for more details).</p> <p>If a different concentration is needed for your purposes please adjust the reconstitution volume as required (please note: the ion concentration of the final solution will vary according to the volume used).</p> <p>Note: Centrifuge vial before opening. When reconstituting, gently pipet and wash down the sides of the vial to ensure full recovery of the protein into solution.</p>
Shipping	The product is shipped at ambient temperature. Upon receipt, store it immediately at the recommended temperature (see below).

GENE INFORMATION

Gene Name	KDM8
Official Symbol	KDM8
Synonyms	FLJ13798
Gene ID	79831

 Tel: 1-631-559-9269 1-516-512-3133

 Email: info@creative-biomart.com  Fax: 1-631-938-8127

 45-1 Ramsey Road, Shirley, NY 11967, USA

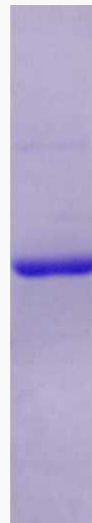
mRNA Refseq [NM_001145348.2](#)

Protein Refseq [NP_001138820.1](#)

MIM [611917](#)

UniProt ID [Q8N371](#)

**SDS-PAGE of
JMJD5-206H**



 Tel: 1-631-559-9269 1-516-512-3133

 Email: info@creative-biomart.com  Fax: 1-631-938-8127

 45-1 Ramsey Road, Shirley, NY 11967, USA