

## Recombinant Human JMJD6 Protein, GST-tagged

**Cat. No.** JMJD6-003H    **Lot. No.** (See product label)

### SPECIFICATION

<b>Product Overview</b>	Recombinant Human JMJD6 protein (2-403) with a N-terminal GST-tag was expressed in E. coli.
<b>Species</b>	Human
<b>Source</b>	E.coli
<b>ProteinLength</b>	2-403
<b>Description</b>	This gene encodes a nuclear protein with a JmjC domain. JmjC domain-containing proteins are predicted to function as protein hydroxylases or histone demethylases. This protein was first identified as a putative phosphatidylserine receptor involved in phagocytosis of apoptotic cells; however, subsequent studies have indicated that it does not directly function in the clearance of apoptotic cells, and questioned whether it is a true phosphatidylserine receptor. Multiple transcript variants encoding different isoforms have been found for this gene.
<b>Molecular Mass</b>	73.2 kDa
<b>Purity</b>	≥50% estimated by SDS-PAGE
<b>Stability</b>	≥ 6 months
<b>Storage</b>	-80 centigrade

 Tel: 1-631-559-9269    1-516-512-3133

 Email: [info@creative-biomart.com](mailto:info@creative-biomart.com)     Fax: 1-631-938-8127

 45-1 Ramsey Road, Shirley, NY 11967, USA

**Storage Buffer** 50 mM HEPES, pH 7.4, containing 150 mM sodium chloride

## GENE INFORMATION

**Gene Name** JMJD6 jumonji domain containing 6, arginine demethylase and lysine hydroxylase [ Homo sapiens (human) ]

**Official Symbol** JMJD6

**Synonyms** JMJD6; jumonji domain containing 6, arginine demethylase and lysine hydroxylase; PSR; PTDSR; PTDSR1; bifunctional arginine demethylase and lysyl-hydroxylase JMJD6; arginine demethylase and lysine hydroxylase; histone arginine demethylase JMJD6; jmjC domain-containing protein 6; jumonji domain containing 6; jumonji domain-containing protein 6; lysyl-hydroxylase JMJD6; peptide-lysine 5-dioxygenase JMJD6; phosphatidylserine receptor; EC 1.14.11.-

**Gene ID** 23210

**mRNA Refseq** NM\_001081461

**Protein Refseq** NP\_001074930

**MIM** 604914

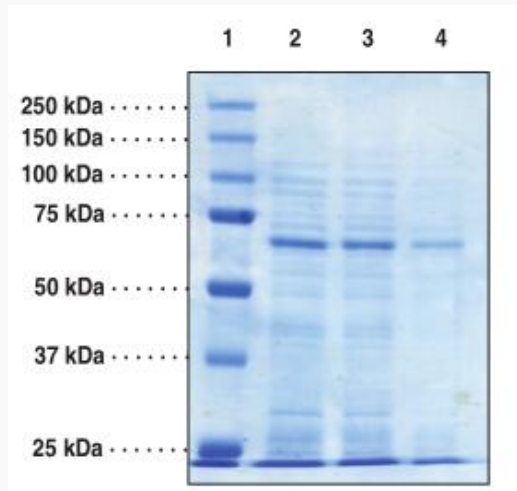
**UniProt ID** Q6NYC1

 Tel: 1-631-559-9269 1-516-512-3133

 Email: [info@creative-biomart.com](mailto:info@creative-biomart.com)  Fax: 1-631-938-8127

 45-1 Ramsey Road, Shirley, NY 11967, USA

**SDS-PAGE Analysis  
of JMJD6**



Lane 1: MW Markers  
Lane 2: JMJD6 (6 µg)  
Lane 3: JMJD6 (4 µg)  
Lane 4: JMJD6 (2 µg)

 Tel: 1-631-559-9269 1-516-512-3133

 Email: [info@creative-biomart.com](mailto:info@creative-biomart.com)  Fax: 1-631-938-8127

 45-1 Ramsey Road, Shirley, NY 11967, USA