

Recombinant Human JMJD6 Protein, GST-tagged

Cat. No. JMJD6-109H **Lot. No.** (See product label)

SPECIFICATION

| | |
|-------------------------|---|
| Product Overview | Recombinant N-terminal GST-tagged full length human JMJD6 protein (2-403) was expressed in E. coli. |
| Species | Human |
| Source | E.coli |
| ProteinLength | 2-403 |
| Description | This gene encodes a nuclear protein with a JmjC domain. JmjC domain-containing proteins are predicted to function as protein hydroxylases or histone demethylases. This protein was first identified as a putative phosphatidylserine receptor involved in phagocytosis of apoptotic cells; however, subsequent studies have indicated that it does not directly function in the clearance of apoptotic cells, and questioned whether it is a true phosphatidylserine receptor. Multiple transcript variants encoding different isoforms have been found for this gene. |
| Molecular Mass | 73.2 kDa |
| Purity | ~50% estimated by SDS-PAGE |
| Stability | ≥ 6 months |
| Storage | At -80 centigrade. |

 Tel: 1-631-559-9269 1-516-512-3133

 Email: info@creative-biomart.com  Fax: 1-631-938-8127

 45-1 Ramsey Road, Shirley, NY 11967, USA

Storage Buffer 50 mM HEPES, pH 7.4, containing 150 mM sodium chloride

GENE INFORMATION

Gene Name JMJD6 jumonji domain containing 6, arginine demethylase and lysine hydroxylase [Homo sapiens (human)]

Official Symbol JMJD6

Synonyms JMJD6; jumonji domain containing 6, arginine demethylase and lysine hydroxylase; PSR; PTDSR; PTDSR1; bifunctional arginine demethylase and lysyl-hydroxylase JMJD6; arginine demethylase and lysine hydroxylase; histone arginine demethylase JMJD6; jmjC domain-containing protein 6; jumonji domain-containing protein 6; lysyl-hydroxylase JMJD6; peptide-lysine 5-dioxygenase JMJD6; phosphatidylserine receptor; EC 1.14.11.-

Gene ID 23210

mRNA Refseq NM_015167

Protein Refseq NP_055982

MIM 604914

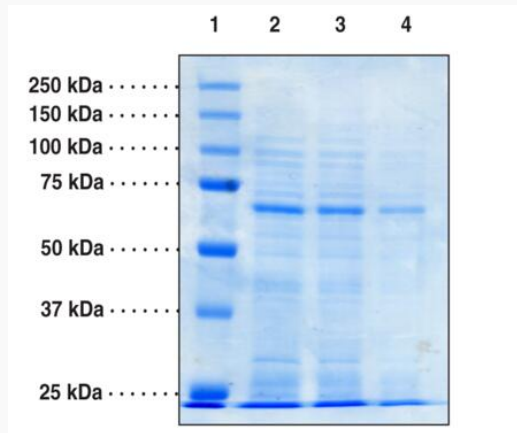
UniProt ID Q6NYC1

 Tel: 1-631-559-9269 1-516-512-3133

 Email: info@creative-biomart.com  Fax: 1-631-938-8127

 45-1 Ramsey Road, Shirley, NY 11967, USA

**SDS-PAGE analysis
of JMJD6**



Lane 1: MW Markers
Lane 2: JMJD6 (6 μ g)
Lane 3: JMJD6 (4 μ g)
Lane 4: JMJD6 (2 μ g)

 Tel: 1-631-559-9269 1-516-512-3133

 Email: info@creative-biomart.com  Fax: 1-631-938-8127

 45-1 Ramsey Road, Shirley, NY 11967, USA