

Active Recombinant Full Length Human JMJD6 Protein, C-Flag-tagged

Cat. No. JMJD6-301HFL Lot. No. (See product label)

SPECIFICATION

Product Overview	Recombinant Full Length Human JMJD6 Protein, fused to Flag-tag at C-terminus, was expressed in Mammalian cells.
Species	Human
Source	Mammalian Cells
Description	This gene encodes a nuclear protein with a JmjC domain. JmjC domain-containing proteins are predicted to function as protein hydroxylases or histone demethylases. This protein was first identified as a putative phosphatidylserine receptor involved in phagocytosis of apoptotic cells; however, subsequent studies have indicated that it does not directly function in the clearance of apoptotic cells, and questioned whether it is a true phosphatidylserine receptor. Multiple transcript variants encoding different isoforms have been found for this gene.
Form	25 mM Tris HCl, pH 7.3, 100 mM glycine, 10% glycerol.
Bio-activity	Co-immunoprecipitation
Molecular Mass	46.3 kDa
AA Sequence	MNHKSKKRIREAKRSARPELKDSLWTRHNYYESFSLSPAAVADNVERADALQLSV EEFVERYERPYKPV VLLNAQEGWSAQEKWTLERLKRKYRNQKFKGEDNDGYSV KMKMKYYIEYMESTRDDSPYIFDSSYGEH PKRRKLLLEDYKVPKFFTTDDLQYAGE

 Tel: 1-631-559-9269 1-516-512-3133

 Email: info@creative-biomart.com  Fax: 1-631-938-8127

 45-1 Ramsey Road, Shirley, NY 11967, USA

KRRPPYRWFVMGPPRSGTGIHIDPLGTSAWNALVQGHKRWCLFP TSTPRELIKVTR
 DEGGNQQDEAITWFNVIYPRTQLPTWPPEFKPLEILQKPGETVFVPGGWWHVVLNL
 DT TIAITQNFASSTNFPVWHKTVRGRPKLSRKWYRILKQEHP LAVLADSVDLQES
 TGIASDSSSDSSSSSS
 SSSSSDSDSECESEGSEGDGTVHRRKKRRTCSMVGNGDTTSQDDCVSKERSSSRT
 RTRPLEQKLISEEDLAANDILDYKDDDDKV

Purity	> 80% as determined by SDS-PAGE and Coomassie blue staining.
Stability	Stable for 12 months from the date of receipt of the product under proper storage and handling conditions. Avoid repeated freeze-thaw cycles.
Storage	Store at -80 centigrade.
Concentration	>50 ug/mL as determined by microplate BCA method.
Preparation	Recombinant protein was captured through anti-DDK affinity column followed by conventional chromatography steps.
Protein Families	Druggable Genome, ES Cell Differentiation/IPS
Full Length	Full L.

GENE INFORMATION

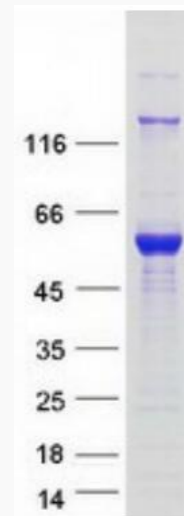
Gene Name	JMJD6 jumonji domain containing 6, arginine demethylase and lysine hydroxylase [Homo sapiens (human)]
Official Symbol	JMJD6
Synonyms	PSR; PTDSR; PTDSR1

 Tel: 1-631-559-9269 1-516-512-3133

 Email: info@creative-biomart.com  Fax: 1-631-938-8127

 45-1 Ramsey Road, Shirley, NY 11967, USA

Gene ID	23210
mRNA Refseq	NM_015167.3
Protein Refseq	NP_055982.2
MIM	604914
UniProt ID	Q6NYC1



Coomassie blue staining of purified JMJD6 protein.

Tel: 1-631-559-9269 1-516-512-3133

Email: info@creative-biomart.com Fax: 1-631-938-8127

45-1 Ramsey Road, Shirley, NY 11967, USA