

Recombinant Human JMJD7 Protein, Myc/DDK-tagged, C13 and N15-labeled

Cat. No. JMJD7-1496H Lot. No. (See product label)

SPECIFICATION

Product Overview	JMJD7 MS Standard C13 and N15-labeled recombinant protein (NP_001108104) with a C-terminal MYC/DDK tag, was expressed in HEK293 cells.
Species	Human
Source	HEK293
Description	This gene encodes a highly conserved protein with a JmjC domain, which are part of the cupin metalloenzyme superfamily. JmjC proteins may function as 2-oxoglutarate-Ferrous (Fe(II))-dependent dioxygenases. Most tissues also express read-through transcripts from this gene into the downstream phospholipase A2, group IVB (cytosolic) gene, some of which may encode fusion proteins combining the N-terminus of this protein with the phospholipase A2, group IVB protein.
Molecular Mass	35.8 kDa
AA Sequence	MAEAALAVRSELREFPAAARELCVPLAVPYLDKPPTPLHFYRDWVCPNRPCCIIRNALQHWPALQKWSLPYFRATVVGSTEVSVAVTPDGYADAVRGDRFMMPAERRLPLSFVLDVLEGRAQHPGVLYVQKQCSNLPSELPQLLPDLESHVPWASEALGKMPDAVNFWLGEAAVAVTSLHKDHYENLYCVVSGEKHFLFHPPSDRPFIPYELYTPATYQLTEEGTFKVVDEEAMEKVPWIPLDPLAPDLARYPSYSQAQALRCTVRAGEMLYLPALWFHHVQQSQGCIAVNFWYDMEYDLKYSYFQLLDSLTKASGLDTRTRPLEQKLISEEDLAANDILDYKDDDDKV

 Tel: 1-631-559-9269 1-516-512-3133

 Email: info@creative-biomart.com  Fax: 1-631-938-8127

 45-1 Ramsey Road, Shirley, NY 11967, USA

Purity	> 80% as determined by SDS-PAGE and Coomassie blue staining
Stability	Stable for 3 months from receipt of products under proper storage and handling conditions.
Storage	Store at -80 centigrade. Avoid repeated freeze-thaw cycles.
Concentration	50 µg/mL as determined by BCA
Storage Buffer	100 mM glycine, 25 mM Tris-HCl, pH 7.3.

GENE INFORMATION

Gene Name	JMJD7 jumonji domain containing 7 [Homo sapiens (human)]
Official Symbol	JMJD7
Synonyms	JMJD7; jumonji domain containing 7; jmjC domain-containing protein 7; jumonji domain-containing protein 7; FLJ20543; FLJ20656; FLJ20807; FLJ77014; FLJ78330;
Gene ID	100137047
mRNA Refseq	NM_001114632
Protein Refseq	NP_001108104
UniProt ID	P0C870

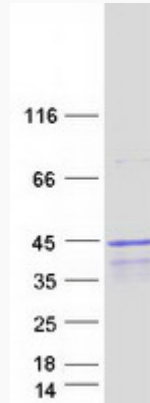
 Tel: 1-631-559-9269 1-516-512-3133

 Email: info@creative-biomart.com  Fax: 1-631-938-8127

 45-1 Ramsey Road, Shirley, NY 11967, USA



SDS-PAGE



Tel: 1-631-559-9269 1-516-512-3133

Email: info@creative-biomart.com Fax: 1-631-938-8127

45-1 Ramsey Road, Shirley, NY 11967, USA