

Recombinant Human JMJD8 protein(24-264aa), His&Myc-tagged

Cat. No. JMJD8-5108H Lot. No. (See product label)

SPECIFICATION

Product Overview	Recombinant Human JMJD8 protein(Q96S16)(24-264aa), fused with N-terminal His tag and C-terminal Myc tag, was expressed in E.coli.
Species	Human
Source	E.coli
ProteinLength	24-264aa
Form	If the delivery form is liquid, the default storage buffer is Tris/PBS-based buffer, 5%-50% glycerol. If the delivery form is lyophilized powder, the buffer before lyophilization is Tris/PBS-based buffer, 6% Trehalose, pH 8.0.
Molecular Mass	34.8 kDa
Purity	Greater than 90% as determined by SDS-PAGE.
Storage	Store at -20°C/-80°C upon receipt, aliquoting is necessary for mutiple use. Avoid repeated freeze-thaw cycles.
Reconstitution	We recommend that this vial be briefly centrifuged prior to opening to bring the contents to the bottom. Please reconstitute protein in deionized sterile water to a concentration of 0.1-1.0 mg/mL. We recommend to add 5-50% of glycerol (final concentration) and aliquot for long-term storage at -20°C/-80°C.

 Tel: 1-631-559-9269 1-516-512-3133

 Email: info@creative-biomart.com  Fax: 1-631-938-8127

 45-1 Ramsey Road, Shirley, NY 11967, USA

AA Sequence

EGDGGWRPGGPGAVAEERCTVERRADLTAEFVQQYAFVRPVILQGLTDNSRFR
ALCSRDRLLASFGDRVVRLSTANTYSYHKVDLPFQEYVEQLLHPQDPTSLGNDTLF
FGDNNFTEWASLFRHYSPPPFGLLGTAPAYSFGIAGAGSGVPPFHHGPGYSEVIYG
RKRWFLYPPEKTPEFHPNKTTLAWLRDTPALPPSARPLECTIRAGEVLYFPDRWW
HATLNLDTSVFISTFLG

GENE INFORMATION

Gene Name [JMJD8 jumonji domain containing 8 \[Homo sapiens \]](#)

Official Symbol [JMJD8](#)

Synonyms JMJD8; jumonji domain containing 8; C16orf20, chromosome 16 open reading frame 20; jmjC domain-containing protein 8; jumonji domain-containing protein 8; PP14397; C16orf20;

Gene ID [339123](#)

mRNA Refseq [NM_001005920](#)

Protein Refseq [NP_001005920](#)

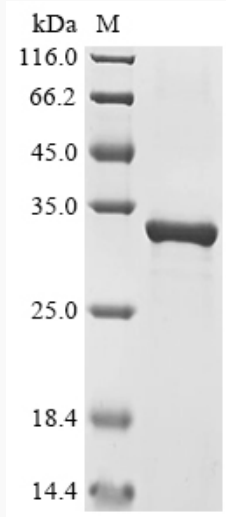
UniProt ID [Q96S16](#)

 Tel: 1-631-559-9269 1-516-512-3133

 Email: info@creative-biomart.com  Fax: 1-631-938-8127

 45-1 Ramsey Road, Shirley, NY 11967, USA

SDS-PAGE



 Tel: 1-631-559-9269 1-516-512-3133

 Email: info@creative-biomart.com  Fax: 1-631-938-8127

 45-1 Ramsey Road, Shirley, NY 11967, USA