

Recombinant Full Length Human JOSD1 Protein, C-Flag-tagged

Cat. No. JOSD1-1649HFL **Lot. No.** (See product label)

SPECIFICATION

Product Overview	Recombinant Full Length Human JOSD1 Protein, fused to Flag-tag at C-terminus, was expressed in Mammalian cells.
Species	Human
Source	Mammalian Cells
Description	Predicted to enable thiol-dependent deubiquitinase. Predicted to be involved in protein deubiquitination. Located in membrane.
Form	25 mM Tris HCl, pH 7.3, 100 mM glycine, 10% glycerol.
Molecular Mass	23 kDa
AA Sequence	MSCVPWKGDKAKSESLELPQAAPPQIYHEKQRRELCALHALNNVFQDSNAFTRDTL QEIFQRLSPNTMVT PHKKSMLGNGNYDVNVIMAALQTKGYEAVWWDKRRDVG LTVNMGFIMNLPSSLCWGPKLPLKRQHW ICVREVGGAYYNLDSKLMPEWIGGESELRKFLKHHLRGKNCCELLLVPEEVEAHQS WRDVTTRTRPLEQKLISEEDLAANDILDYKDDDDKV
Purity	> 80% as determined by SDS-PAGE and Coomassie blue staining.
Stability	Stable for 12 months from the date of receipt of the product under proper storage and handling conditions. Avoid repeated freeze-thaw cycles.

 Tel: 1-631-559-9269 1-516-512-3133

 Email: info@creative-biomart.com  Fax: 1-631-938-8127

 45-1 Ramsey Road, Shirley, NY 11967, USA

Storage	Store at -80 centigrade.
Concentration	>50 ug/mL as determined by microplate BCA method.
Preparation	Recombinant protein was captured through anti-DDK affinity column followed by conventional chromatography steps.
Protein Families	Druggable Genome
Full Length	Full L.

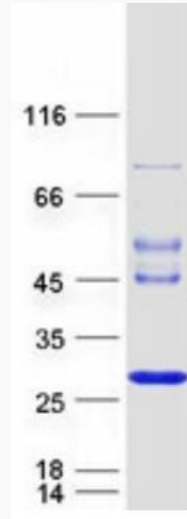
GENE INFORMATION

Gene Name	JOSD1 Josephin domain containing 1 [Homo sapiens (human)]
Official Symbol	JOSD1
Synonyms	dJ508I15.2
Gene ID	9929
mRNA Refseq	NM_014876.7
Protein Refseq	NP_055691.1
MIM	615323
UniProt ID	Q15040

 Tel: 1-631-559-9269 1-516-512-3133

 Email: info@creative-biomart.com  Fax: 1-631-938-8127

 45-1 Ramsey Road, Shirley, NY 11967, USA



Coomassie blue staining of purified JOSD1 protein.

 Tel: 1-631-559-9269 1-516-512-3133

 Email: info@creative-biomart.com  Fax: 1-631-938-8127

 45-1 Ramsey Road, Shirley, NY 11967, USA