

# Recombinant Human JOSD1 Protein, Myc/DDK-tagged, C13 and N15-labeled

Cat. No. JOSD1-1822H Lot. No. (See product label)

## SPECIFICATION

<b>Product Overview</b>	JOSD1 MS Standard C13 and N15-labeled recombinant protein (NP_055691) with a C-terminal MYC/DDK tag, was expressed in HEK293 cells.
<b>Species</b>	Human
<b>Source</b>	HEK293
<b>Description</b>	Deubiquitinates monoubiquitinated probes (in vitro). When ubiquitinated, cleaves 'Lys-63'-linked and 'Lys-48'-linked poly-ubiquitin chains (in vitro), hence may act as a deubiquitinating enzyme. May increase macropinocytosis and suppress clathrin- and caveolae-mediated endocytosis. May enhance membrane dynamics and cell motility independently of its catalytic activity.
<b>Molecular Mass</b>	23.2 kDa
<b>AA Sequence</b>	MSCVPWKGDKAKSESLELPQAAPPQIYHEKQRRELCALHALNNVFQDSNAFTRDTL QEIFQRLSPNTMVTPHKKSMLGNGNYDVNVIMAALQTKGYEAVVWVKRRDVGVI ALTNVMGFIMNLPSSLCWGPLKLPLKRQHWICVREVGAYYNLDSKLMPEWIGGESE LRKFLKHHLRGKNCELLLVPEEVEAHQSWRTDVTRTRPLEQKLISEEDLAANDILDY KDDDDKV
<b>Purity</b>	> 80% as determined by SDS-PAGE and Coomassie blue staining
<b>Stability</b>	Stable for 3 months from receipt of products under proper storage and handling

 Tel: 1-631-559-9269 1-516-512-3133

 Email: [info@creative-biomart.com](mailto:info@creative-biomart.com)  Fax: 1-631-938-8127

 45-1 Ramsey Road, Shirley, NY 11967, USA

conditions.

**Storage** Store at -80 centigrade. Avoid repeated freeze-thaw cycles.

**Concentration** 50 µg/mL as determined by BCA

**Storage Buffer** 100 mM glycine, 25 mM Tris-HCl, pH 7.3.

## GENE INFORMATION

**Gene Name** [JOSD1 Josephin domain containing 1 \[ Homo sapiens \(human\) \]](#)

**Official Symbol** [JOSD1](#)

**Synonyms** JOSD1; Josephin domain containing 1; Josephin-1; KIAA0063; josephin domain-containing 1; dJ508I15.2;

**Gene ID** [9929](#)

**mRNA Refseq** [NM\\_014876](#)

**Protein Refseq** [NP\\_055691](#)

**MIM** [615323](#)

**UniProt ID** [Q15040](#)

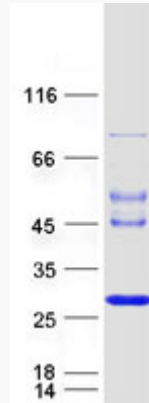
 Tel: 1-631-559-9269 1-516-512-3133

 Email: [info@creative-biomart.com](mailto:info@creative-biomart.com)  Fax: 1-631-938-8127

 45-1 Ramsey Road, Shirley, NY 11967, USA



SDS-PAGE



Tel: 1-631-559-9269 1-516-512-3133

Email: [info@creative-biomart.com](mailto:info@creative-biomart.com) Fax: 1-631-938-8127

45-1 Ramsey Road, Shirley, NY 11967, USA