

# Recombinant Human JOSD2 Protein, Myc/DDK-tagged, C13 and N15-labeled

Cat. No. JOSD2-3923H Lot. No. (See product label)

## SPECIFICATION

<b>Product Overview</b>	JOSD2 MS Standard C13 and N15-labeled recombinant protein (NP_612207) with a C-terminal MYC/DDK tag, was expressed in HEK293 cells.
<b>Species</b>	Human
<b>Source</b>	HEK293
<b>Description</b>	This gene encodes a protein containing a Josephin domain. Josephin domain-containing proteins are deubiquitinating enzymes which catalyze the hydrolysis of the bond between the C-terminal glycine of the ubiquitin peptide and protein substrates. Alternatively spliced transcript variants encoding multiple isoforms have been observed for this gene.
<b>Molecular Mass</b>	20.8 kDa
<b>AA Sequence</b>	MSQAPGAQSPPTVYHERQRLELCAVHALNNVLQQQLFSQEAADEICKRLAPDSRL NPHRSLGTYGNYDVNVIMAALQGLGLAAVWDRRRPLSQLALPQVLGLILNLPSPV SLGLLSLPLRRRHVVALRQVDGVVYNNLDSKLRAPALGDEDGVRAFLAAALAQGLC EVLLVVTKEVEEKGSWLRTDTRTRPLEQKLISEEDLAANDILDYKDDDDKV
<b>Purity</b>	> 80% as determined by SDS-PAGE and Coomassie blue staining
<b>Stability</b>	Stable for 3 months from receipt of products under proper storage and handling conditions.

 Tel: 1-631-559-9269 1-516-512-3133

 Email: [info@creative-biomart.com](mailto:info@creative-biomart.com)  Fax: 1-631-938-8127

 45-1 Ramsey Road, Shirley, NY 11967, USA

<b>Storage</b>	Store at -80 centigrade. Avoid repeated freeze-thaw cycles.
<b>Concentration</b>	50 µg/mL as determined by BCA
<b>Storage Buffer</b>	100 mM glycine, 25 mM Tris-HCl, pH 7.3.

## GENE INFORMATION

<b>Gene Name</b>	JOSD2 Josephin domain containing 2 [ Homo sapiens (human) ]
<b>Official Symbol</b>	JOSD2
<b>Synonyms</b>	JOSD2; Josephin domain containing 2; Josephin-2; SBB154; josephin domain-containing protein 2; FLJ29018;
<b>Gene ID</b>	126119
<b>mRNA Refseq</b>	NM_138334
<b>Protein Refseq</b>	NP_612207
<b>MIM</b>	615324
<b>UniProt ID</b>	Q8TAC2

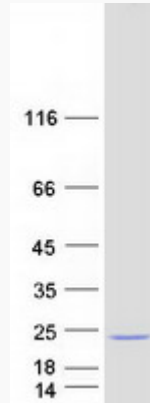
 Tel: 1-631-559-9269 1-516-512-3133

 Email: [info@creative-biomart.com](mailto:info@creative-biomart.com)  Fax: 1-631-938-8127

 45-1 Ramsey Road, Shirley, NY 11967, USA



SDS-PAGE



Tel: 1-631-559-9269 1-516-512-3133

Email: [info@creative-biomart.com](mailto:info@creative-biomart.com) Fax: 1-631-938-8127

45-1 Ramsey Road, Shirley, NY 11967, USA