

Recombinant Human JPH1 Protein (Met1-Ala201), N-His tagged

Cat. No. JPH1-3590H Lot. No. (See product label)

SPECIFICATION

Product Overview	Recombinant human JPH1 (Met1-Ala201) protein fused with the N-His tag was expressed in E. coli.
Species	Human
Source	E.coli
ProteinLength	Met1-Ala201
Molecular Mass	23.86 kDa
Purity	>90 % as determined by SDS-PAGE.
Notes	For research use only.
Storage	Use a manual defrost freezer and avoid repeated freeze thaw cycles. Store at 2 to 8 centigrade for one week. Store at -20 to -80 centigrade for twelve months from the date of receipt.
Storage Buffer	0.01M PBS, pH 7.4, 0.02 % NLS
Reconstitution	Reconstitute in sterile water for a stock solution.
Shipping	In general, proteins are provided as lyophilized powder/frozen liquid. They are

 Tel: 1-631-559-9269 1-516-512-3133

 Email: info@creative-biomart.com  Fax: 1-631-938-8127

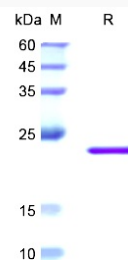
 45-1 Ramsey Road, Shirley, NY 11967, USA

shipped out with dry ice/blue ice unless customers require otherwise.

GENE INFORMATION

Gene Name	JPH1 junctophilin 1 [Homo sapiens (human)]
Official Symbol	JPH1
Synonyms	JPH1; junctophilin 1; junctophilin-1; JP 1; mitsugumin72; junctophilin type1; junctophilin type 1; JP1; JP-1; DKFZp762L0313;
Gene ID	56704
mRNA Refseq	NM_020647
Protein Refseq	NP_065698
MIM	605266
UniProt ID	Q9HDC5

SDS-PAGE



Tel: 1-631-559-9269 1-516-512-3133

Email: info@creative-biomart.com Fax: 1-631-938-8127

45-1 Ramsey Road, Shirley, NY 11967, USA