

Recombinant Human JPH1 protein, His-tagged

Cat. No. JPH1-7842H Lot. No. (See product label)

SPECIFICATION

Product Overview Recombinant Human JPH1 protein(464-639 aa), fused with N-terminal His tag, was expressed in E. coli.

Species Human

Source E.coli

ProteinLength 464-639 aa

Form The purified protein was Lyophilized from sterile PBS (58mM Na₂HPO₄, 17mM NaH₂PO₄, 68mM NaCl, pH7.4). 5 % trehalose and 5 % mannitol are added as protectant before lyophilization. The elution buffer contain 300mM imidazole.

Storage Short-term storage: Store at 2-8°C for (1-2 weeks). Long-term storage: Aliquot and store at -20°C to -80°C for up to 3 months, reconstitution with sterile water and addition of an equal volume of glycerol. Avoid repeat freeze-thaw cycles.

Purity 90%, by SDS-PAGE with Coomassie Brilliant Blue staining.

GENE INFORMATION

Official Symbol [JPH1](#)

Synonyms JPH1; junctophilin 1; junctophilin-1; JP 1; mitsugumin72; junctophilin type1; junctophilin type 1; JP1; JP-1; DKFZp762L0313;

 Tel: 1-631-559-9269 1-516-512-3133

 Email: info@creative-biomart.com  Fax: 1-631-938-8127

 45-1 Ramsey Road, Shirley, NY 11967, USA

Gene ID 56704

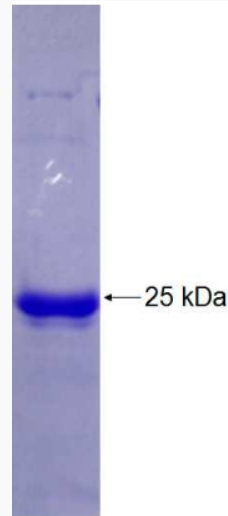
mRNA Refseq NM_020647

Protein Refseq NP_065698

MIM 605266

UniProt ID Q9HDC5

SDS-PAGE



Tel: 1-631-559-9269 1-516-512-3133

Email: info@creative-biomart.com Fax: 1-631-938-8127

45-1 Ramsey Road, Shirley, NY 11967, USA