

Recombinant Human JPH2 protein, His-tagged

Cat. No. JPH2-5653H Lot. No. (See product label)

SPECIFICATION

Product Overview	Recombinant Human JPH2 protein(430-674 aa), fused with N-terminal His tag, was expressed in E.coli.
Species	Human
Source	E.coli
ProteinLength	430-674 aa
Form	The purified protein was lyophilized from sterile phosphate-buffered saline (PBS: 58 mM Na ₂ HPO ₄ , 17 mM NaH ₂ PO ₄ , 68 mM NaCl, pH 7.4). Prior to lyophilization, 5% (w/v) trehalose and 5% (w/v) mannitol were incorporated as cryoprotective excipients. The protein was eluted with a buffer containing 300 mM imidazole.
AASequence	GPEYQKRLLQEILENSESLLLEPPDRGAGAAGLPQPPRESPQLHERETPRPEGGSP SPAGTPPQPKRPRPGVSKDGLLSPGAWNGEPSGEGSRSVTPSEGAGRRSPARPA TERMAIEALQAPPAPSREPEVALYQGYHSYAVRTTPPEPPPFEDQPEPEVSGSESA PSSPATAPLQAPTTLRGPEPARETPAKLEPKPIIPKAEPRAKARKTEARGLTKAGAKKK ARKEAALAAEAEVEVEEVPNT
Purity	85%, by SDS-PAGE with Coomassie Brilliant Blue staining.
Storage	Store at 2-8°C for 1-2 weeks. Aliquot and store at -20°C to -80°C for up to 3 months, reconstitution with sterile water and addition of an equal volume of glycerol. Avoid repeat freeze-thaw cycles.

 Tel: 1-631-559-9269 1-516-512-3133

 Email: info@creative-biomart.com  Fax: 1-631-938-8127

 45-1 Ramsey Road, Shirley, NY 11967, USA

Reconstitution

Dissolve the product in 200 μ l sterile water to achieve a working concentration of 0.25 g/ μ l. If experimental compatibility allows, mix the aqueous solution with an equal volume of glycerol (1:1 ratio) after initial reconstitution.

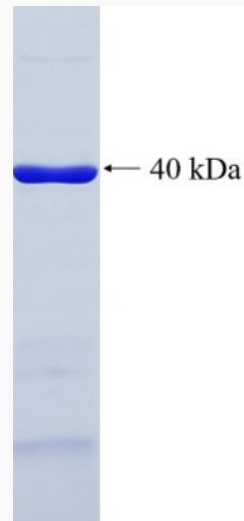
GENE INFORMATION

Gene Name JPH2 junctophilin 2 [Homo sapiens]

Official Symbol JPH2

Synonyms JPH2; junctophilin 2; JP2;

Gene ID 57362

SDS-PAGE

 Tel: 1-631-559-9269 1-516-512-3133

 Email: info@creative-biomart.com  Fax: 1-631-938-8127

 45-1 Ramsey Road, Shirley, NY 11967, USA