

Recombinant Human JPH2 Protein, Myc/DDK-tagged, C13 and N15-labeled

Cat. No. JPH2-6388H **Lot. No.** (See product label)

SPECIFICATION

| | |
|-------------------------|---|
| Product Overview | JPH2 MS Standard C13 and N15-labeled recombinant protein (NP_065166) with a C-terminal MYC/DDK tag, was expressed in HEK293 cells. |
| Species | Human |
| Source | HEK293 |
| Description | Junctional complexes between the plasma membrane and endoplasmic/sarcoplasmic reticulum are a common feature of all excitable cell types and mediate cross talk between cell surface and intracellular ion channels. The protein encoded by this gene is a component of junctional complexes and is composed of a C-terminal hydrophobic segment spanning the endoplasmic/sarcoplasmic reticulum membrane and a remaining cytoplasmic domain that shows specific affinity for the plasma membrane. This gene is a member of the junctophilin gene family. Alternative splicing has been observed at this locus and two variants encoding distinct isoforms are described. |
| Molecular Mass | 74 kDa |
| AA Sequence | MSGGRFDFDDGGAYCGGWEGGKAHGHGLCTGPKGQGEYSGSWNFGFEVAGVYT WPSGNTFEGYWSQGKRHGLGIETKGRWLYKGEWTHGFKGRYGRIRQSSSSGAKYE GTWNNGLQDGYGTETYADGGTYQGQFTNGMRHGYGVRQSVPYGMAVVVRSPLR TSLSSLRSEHSNGTVAPDSPASPASDGPALPSPAIPRGGFALSLLANAEAAARAPKG GGLFQRGALLGKLRRRAESRTSVGSQRSRVSFLKSDLSSGASDAASTASLGEEAEGA |

 Tel: 1-631-559-9269 1-516-512-3133

 Email: info@creative-biomart.com  Fax: 1-631-938-8127

 45-1 Ramsey Road, Shirley, NY 11967, USA

DEAAPFEADIDATTTETYMGEWKNDKRSGFGVSSGLRYEGEWLDNLRHGYGC
 TTLPDGHREEGKYRHNVLVKDTKRRMLQLKSNKVRQKVEHSVEGAQRAAAIARQK
 AEIAASRTSHAKAKAEAAEQAALANQESNIARTLARELAPDFYQPGPEYQKRLLQ
 EILENSESLEPPDRGAGAAGLPQPPRESPQLHERETPRPEGGSPSPAGTPPQPKR
 PRPGVSKDGLLSPGAWNGEPSGEGSRSVTPSEGAGRRSPARPATERMAIEALQAP
 PAPSREPEVALYQGYHSYAVRTTPPEPPPFEDQPEPEVSGSESAPSSPATAPLQAP
 TLRGPEPARETPAKLEPKPIIPKAEPRAKARKTEARGLTKAGAKKKARKEAALAAEAE
 VEVEVPNTILICMVILLNIGLAILFVHLLTTRTRPLEQKLISEEDLAANDILDYKDDDDK
 V

Purity > 80% as determined by SDS-PAGE and Coomassie blue staining

Stability Stable for 3 months from receipt of products under proper storage and handling conditions.

Storage Store at -80 centigrade. Avoid repeated freeze-thaw cycles.

Concentration 50 µg/mL as determined by BCA

Storage Buffer 100 mM glycine, 25 mM Tris-HCl, pH 7.3.

GENE INFORMATION

Gene Name [JPH2 junctophilin 2 \[Homo sapiens \(human\) \]](#)

Official Symbol [JPH2](#)

Synonyms JPH2; junctophilin 2; JP2; JP-2; CMH17; junctophilin-2; junctophilin type 2

Gene ID [57158](#)

 Tel: 1-631-559-9269 1-516-512-3133

 Email: info@creative-biomart.com  Fax: 1-631-938-8127

 45-1 Ramsey Road, Shirley, NY 11967, USA

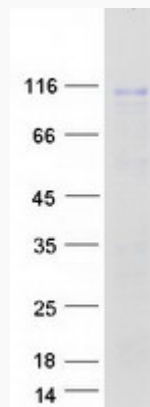
mRNA Refseq [NM_020433](#)

Protein Refseq [NP_065166](#)

MIM [605267](#)

UniProt ID [Q9BR39](#)

SDS-PAGE



 Tel: 1-631-559-9269 1-516-512-3133

 Email: info@creative-biomart.com  Fax: 1-631-938-8127

 45-1 Ramsey Road, Shirley, NY 11967, USA