

Recombinant Human JPH3 protein, His & T7-tagged

Cat. No. JPH3-1746H **Lot. No.** (See product label)

SPECIFICATION

Product Overview	Recombinant Human JPH3 aa. (Met1~Leu266 (Accession # Q8WXH2)) fused with N-terminal His & T7 tag was produced in E. coli cells.
Species	Human
Source	E.coli
ProteinLength	Met1~Leu266 (Accession # Q8WXH2)
Description	Junctional complexes between the plasma membrane and endoplasmic/sarcoplasmic reticulum are a common feature of all excitable cell types and mediate cross talk between cell surface and intracellular ion channels. The protein encoded by this gene is a component of junctional complexes and is composed of a C-terminal hydrophobic segment spanning the endoplasmic/sarcoplasmic reticulum membrane and a remaining cytoplasmic domain that shows specific affinity for the plasma membrane. CAG/CTG repeat expansion from normally 6-28 repeats to 40-59 repeats in the 3' UTR of this gene have been associated with Huntington disease-like 2 (HDL2). This gene is a member of the junctophilin gene family. Alternatively spliced transcript variants have been described for this gene.
Form	Freeze-dried powder
Molecular Mass	Predicted Molecular Mass: 32.1kDa
Endotoxin	<1.0EU per 1ug (determined by the LAL method)

 Tel: 1-631-559-9269 1-516-512-3133

 Email: info@creative-biomart.com  Fax: 1-631-938-8127

 45-1 Ramsey Road, Shirley, NY 11967, USA

Purity	>90%
Applications	SDS-PAGE; WB; ELISA; IP.
Stability	The thermal stability is described by the loss rate. The loss rate was determined by accelerated thermal degradation test, that is, incubate the protein at 37°C for 48h, and no obvious degradation and precipitation were observed. The loss rate is less than 5% within the expiration date under appropriate storage condition.
Storage	Avoid repeated freeze/thaw cycles. Store at 2-8°C for one month. Aliquot and store at -80°C for 12 months.
Storage buffer	Supplied as lyophilized form in 20mM Tris, 150mM NaCl, pH8.0, containing 1mM EDTA, 1mM DTT, 0.01% sarcosyl, 5% trehalose, and preservative.
Reconstitution	Reconstitute in sterile ddH ₂ O.
Isoelectric Point	9.6

GENE INFORMATION

Gene Name	JPH3 junctophilin 3 [Homo sapiens (human)]
Official Symbol	JPH3
Synonyms	JPH3; junctophilin 3; JP3; HDL2; JP-3; TNRC22; CAGL237; junctophilin-3; junctophilin type 3; trinucleotide repeat containing 22
Gene ID	57338
mRNA Refseq	NM_020655.3

 Tel: 1-631-559-9269 1-516-512-3133

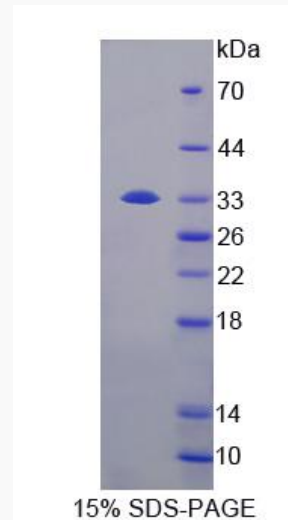
 Email: info@creative-biomart.com  Fax: 1-631-938-8127

 45-1 Ramsey Road, Shirley, NY 11967, USA

Protein Refseq NP_065706.2

UniProt ID Q8WXH2

SDS-PAGE



 Tel: 1-631-559-9269 1-516-512-3133

 Email: info@creative-biomart.com  Fax: 1-631-938-8127

 45-1 Ramsey Road, Shirley, NY 11967, USA