

Recombinant Human JPH4 Protein, MYC/DDK-tagged, C13 and N15-labeled

Cat. No. JPH4-376H **Lot. No.** (See product label)

SPECIFICATION

Product Overview

JPH4 MS Standard C13 and N15-labeled recombinant protein (NP_115828) with a C-terminal MYC/DDK tag, was expressed in HEK293 cells.

Species

Human

Source

HEK293

Description

This gene encodes a member of the junctophilin family of transmembrane proteins that are involved in the formation of the junctional membrane complexes between the plasma membrane and the endoplasmic/sarcoplasmic reticulum in excitable cells. The encoded protein contains a conserved N-terminal repeat region called the membrane occupation and recognition nexus sequence that is found in other members of the junctophilin family. Alternative splicing results in multiple transcript variants. [provided by RefSeq, Mar 2009]

Molecular Mass

65.7 kDa

AA Sequence

MSPGGKFDFFDDGGCYVGGWEAGRAHGYGVCTGPGAQGEYSGCWAHGFESLGVF
 TGPGGHSYQGHWQQGKREGLGVERKSRWTYRGEWLGGLKGRSGVWESVSLR
 YAGLWKDGFQDGYGTETYSDGGTYQQQWQAGKRHGYGVRQSVYPYHQAALLRSP
 RRTSLDSGHSDPPTPPPPLPLPGDEGGSPASGSRGGFVLAGPGDADGASSRK RTP
 AAGGFFRRSLLSGLRAGGRRSSLGSKRGLRSEVSSEVGSTGPPGSEASGPAA
 APPALIEGSATEVYAGEWRADRRSGFGVSQRSNGLRYEGEWLGNQRHGYGRTR

 Tel: 1-631-559-9269 1-516-512-3133

 Email: info@creative-biomart.com  Fax: 1-631-938-8127

 45-1 Ramsey Road, Shirley, NY 11967, USA

PDGSREEGKYKRNLVHGGRVRSLLPLALRRGKVKEKVDRAVEGARRAVSAARQR
 QEIAAARAADALLKAVAASSVAEKAVEAARMAKLIQDLQPMLEAPGRRRPRQDSEG
 SDTEPLDEDSPGVYENGLTPSEGSPPELSSPASSRQPWRPPACRSPLPPGGDQGP
 FSSPKAWPEEWGGAGAQAEEELAGYEADEAGMQGPGPRDGSPLLGGCSDSSGSL
 REEEGEDEEPLPPLRAPAGTEPEPIAMLVLRGSSSRGHDAGCLTEELGEPATERP
 AQPGAANPLVVGAVALLDLSLAFLFSQLLTTRTRPLEQKLISEEDLAANDILDYKDDD
 DKV

Purity > 80% as determined by SDS-PAGE and Coomassie blue staining

Stability Stable for 3 months from receipt of products under proper storage and handling conditions.

Storage Store at -80 centigrade. Avoid repeated freeze-thaw cycles.

Concentration 50 µg/mL as determined by BCA

Storage Buffer 100 mM glycine, 25 mM Tris-HCl, pH 7.3.

GENE INFORMATION

Gene Name [JPH4 junctophilin 4 \[Homo sapiens \(human\) \]](#)

Official Symbol [JPH4](#)

Synonyms JP4; JPHL1

Gene ID [84502](#)

mRNA Refseq [NM_032452](#)

 Tel: 1-631-559-9269 1-516-512-3133

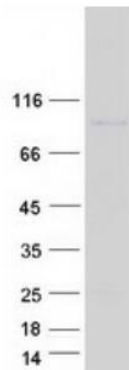
 Email: info@creative-biomart.com  Fax: 1-631-938-8127

 45-1 Ramsey Road, Shirley, NY 11967, USA

Protein Refseq NP_115828

UniProt ID Q96JJ6

SDS-PAGE



 Tel: 1-631-559-9269 1-516-512-3133

 Email: info@creative-biomart.com  Fax: 1-631-938-8127

 45-1 Ramsey Road, Shirley, NY 11967, USA