

Recombinant Human JUN protein, His-SUMO-tagged

Cat. No. JUN-784H Lot. No. (See product label)

SPECIFICATION

Product Overview	Recombinant Human JUN protein(P05412)(1-331aa), fused with N-terminal His and SUMO tag, was expressed in E.coli.
Species	Human
Source	E.coli
ProteinLength	1-331a.a.
Tag	His&SUMO
Form	If the delivery form is liquid, the default storage buffer is Tris/PBS-based buffer, 5%-50% glycerol. If the delivery form is lyophilized powder, the buffer before lyophilization is Tris/PBS-based buffer, 6% Trehalose, pH 8.0.
Molecular Mass	48.6 kDa
Purity	Greater than 85% as determined by SDS-PAGE.
Storage	Store at -20°C/-80°C upon receipt, aliquoting is necessary for mutiple use. Avoid repeated freeze-thaw cycles.
Reconstitution	We recommend that this vial be briefly centrifuged prior to opening to bring the contents to the bottom. Please reconstitute protein in deionized sterile water to a concentration of 0.1-1.0 mg/mL.We recommend to add 5-50% of glycerol (final

 Tel: 1-631-559-9269 1-516-512-3133

 Email: info@creative-biomart.com  Fax: 1-631-938-8127

 45-1 Ramsey Road, Shirley, NY 11967, USA

concentration) and aliquot for long-term storage at -20°C/-80°C.

AA Sequence

MTAKMETTFYDDALNASFLPSESGPYGYSNPKILKQSMTLNLADPVGSLKPHLRAKN
 SDLLTSPDVGLLKLASPELERLIQSSNGHITTTPTPTQFLCPKNVTDEQEGFAEGFVR
 ALAELHSQNTLPSVTSAAQPVNGAGMVAPAVASVAGGSGSGGFSASLHSEPPVYA
 NLSNFNPGALSSGGGAPSYGAAGLAFPAQPQQQQPPHHLPPQMPVQHPRQLAL
 KEEPQTVPEMPGETPPLSPIDMESQERIKAEKRMRNRNRIASKCRKRKLERIARLEE
 KVKTLKAQNSELASTANMLREQVAQLKQKVMNHVNSGCQLMLTQQLQTF

GENE INFORMATION

Gene Name [JUN jun proto-oncogene \[Homo sapiens \]](#)

Official Symbol [JUN](#)

Synonyms

JUN; jun proto-oncogene; jun oncogene , v jun avian sarcoma virus 17 oncogene homolog , v jun sarcoma virus 17 oncogene homolog (avian); transcription factor AP-1; AP 1; c Jun; p39; jun oncogene; activator protein 1; proto-oncogene c-Jun; enhancer-binding protein AP1; Jun activation domain binding protein; v-jun sarcoma virus 17 oncogene homolog; v-jun avian sarcoma virus 17 oncogene homolog; AP1; AP-1; c-Jun;

Gene ID [3725](#)

mRNA Refseq [NM_002228](#)

Protein Refseq [NP_002219](#)

MIM [165160](#)

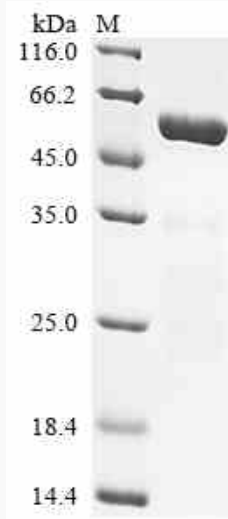
UniProt ID [P05412](#)

 Tel: 1-631-559-9269 1-516-512-3133

 Email: info@creative-biomart.com  Fax: 1-631-938-8127

 45-1 Ramsey Road, Shirley, NY 11967, USA

SDS-PAGE



 Tel: 1-631-559-9269 1-516-512-3133

 Email: info@creative-biomart.com  Fax: 1-631-938-8127

 45-1 Ramsey Road, Shirley, NY 11967, USA