

Recombinant Human JUP protein, GST-tagged

Cat. No. JUP-27307TH Lot. No. (See product label)

SPECIFICATION

Product Overview	Recombinant Human JUP1 a.a. - 745 a.a.fused with GST tag at N-terminal was expressed in Wheat Germ.
Species	Human
Source	Wheat Germ
ProteinLength	1-745 a.a.
Description	This gene encodes a major cytoplasmic protein which is the only known constituent common to submembranous plaques of both desmosomes and intermediate junctions. This protein forms distinct complexes with cadherins and desmosomal cadherins and is a member of the catenin family since it contains a distinct repeating amino acid motif called the armadillo repeat. Mutation in this gene has been associated with Naxos disease. Alternative splicing occurs in this gene; however, not all transcripts have been fully described.
Form	50 mM Tris-HCl, 10 mM reduced Glutathione, pH=8.0 in the elution buffer.
Molecular Mass	107.69 kDa
AA Sequence	MEVMNLMEQPIKVTEWQQTYTYDSGIHSGANTCVPSVSSKGIMEEDEACGRQYTLK KTTTYTQGVPPSQGDLEYQMSTTARAKRVREAMCPGVSGEDSSLLLATQVEGQAT NLQRLAEPSSLKSAIVHLINYQDDAELATRALPELTKLLNDEDPVVVTKAAMIVNQLS KKEASRRALMGSPQLVAAVVRTMQNTSDLDTARCTTSILHNLSSHREGLLAIFKSGG

 Tel: 1-631-559-9269 1-516-512-3133

 Email: info@creative-biomart.com  Fax: 1-631-938-8127

 45-1 Ramsey Road, Shirley, NY 11967, USA

IPALVRMLSSPVESVLFYAITTLHNLLLYQEGAKMAVRLADGLQKMVPLLKNNPKFL
 AITTDCLQLLAYGNQESKLILANGGPQALVQIMRNYSYEKLLWTTSRVLKVLSVCPS
 NKPAIVEAGGMQALGKHLTSNSPRLVQNCLWTLRNLSDVATKQEGLESVLKILVNQL
 SVDDVNVLTGATGTLNLTNNKSKNKTQNSGVEALIHAILRAGDKDDITEPAVCA
 LRHLTSRHPEAEMAQNSVRLNYGIPAIVKLLNQPNQWPLVKATIGLIRNLALCPANHA
 PLQEAAVIPRLVQLLVKAHQDAQRHVAAGTQQPYTDGVRMEEIVEGCTGALHILARD
 PMNRMEIFRLNTIPLFVQPLYSSVENIQRVAAGALCELAQDKEAADAIDAEGASAPLM
 ELLHSRNEGATYAAAVLFRISEDKNPDYRKRVSVELTNSLFLKHDPAAWEEAAQSMIPI
 NEPYGDDLDATYRPMYSSDVPLDPLEMHMDMDGDYPIDTYSGLRPPYPTADHML
 A

Applications

Enzyme-linked Immunoabsorbent Assay; Western Blot (Recombinant protein);
 Antibody Production; Protein Array

Notes

Best use within three months from the date of receipt of this protein.

Storage

Store at -80 centigrade. Aliquot to avoid repeated freezing and thawing.

GENE INFORMATION

Gene Name

JUP junction plakoglobin [[Homo sapiens](#)]

Official Symbol

JUP

Synonyms

JUP; junction plakoglobin; catenin (cadherin associated protein), gamma 80kDa ,
 CTNNG; DP3; DPIII; PDGB; PKGB; catenin gamma; desmoplakin-3; gamma-catenin;
 desmoplakin III; catenin (cadherin-associated protein), gamma 80kDa; catenin
 (cadherin-associated protein), gamma (80kD); CTNNG; ARVD12;

Gene ID

3728

 Tel: 1-631-559-9269 1-516-512-3133

 Email: info@creative-biomart.com  Fax: 1-631-938-8127

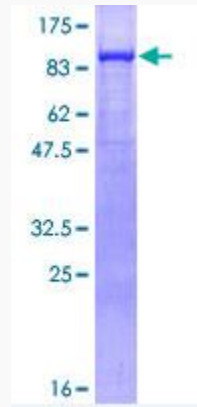
 45-1 Ramsey Road, Shirley, NY 11967, USA


mRNA Refseq	NM_002230
Protein Refseq	NP_002221
MIM	173325
UniProt ID	P14923
Chromosome Location	17q21
Pathway	Acute myeloid leukemia, organism-specific biosystem; Acute myeloid leukemia, conserved biosystem; Adherens junctions interactions, organism-specific biosystem; Arf6 trafficking events, organism-specific biosystem; Arrhythmogenic right ventricular cardiomyopathy (ARVC), organism-specific biosystem; Arrhythmogenic right ventricular cardiomyopathy (ARVC), conserved biosystem; Cell junction organization, organism-specific biosystem;
Function	RPTP-like protein binding; alpha-catenin binding; cadherin binding; protein binding; protein homodimerization activity; protein kinase binding; protein phosphatase binding; structural constituent of cell wall; structural molecule activity; transcription coactivator activity;

 Tel: 1-631-559-9269 1-516-512-3133


 Email: info@creative-biomart.com  Fax: 1-631-938-8127

 45-1 Ramsey Road, Shirley, NY 11967, USA



 Tel: 1-631-559-9269 1-516-512-3133

 Email: info@creative-biomart.com  Fax: 1-631-938-8127

 45-1 Ramsey Road, Shirley, NY 11967, USA