

# Active Recombinant Full Length Human JUP Protein, C-Flag-tagged

**Cat. No.** JUP-295HFL    **Lot. No.** (See product label)

## SPECIFICATION

<b>Product Overview</b>	Recombinant Full Length Human JUP Protein, fused to Flag-tag at C-terminus, was expressed in Mammalian cells.
<b>Species</b>	Human
<b>Source</b>	Mammalian Cells
<b>Description</b>	This gene encodes a major cytoplasmic protein which is the only known constituent common to submembranous plaques of both desmosomes and intermediate junctions. This protein forms distinct complexes with cadherins and desmosomal cadherins and is a member of the catenin family since it contains a distinct repeating amino acid motif called the armadillo repeat. Mutation in this gene has been associated with Naxos disease. Alternative splicing occurs in this gene; however, not all transcripts have been fully described.
<b>Form</b>	25 mM Tris HCl, pH 7.3, 100 mM glycine, 10% glycerol.
<b>Bio-activity</b>	Surface Plasmon Resonance (SPR)
<b>Molecular Mass</b>	81.6 kDa
<b>AA Sequence</b>	MEVMNLMEQPIKVTEWQQTYTYDSGIHSGANTCVPSVSSKGIMEEDEACGRQYTLK KTTTYTQGVPPSQG DLEYQMSTTARAKRVREAMCPGVSGEDSSLLLATQVEGQAT NLQRLAEPSSLKSAIVHLINYQDDAELA TRALPELTKLLNDEDPVVVTKAAMIVNQL

 Tel: 1-631-559-9269    1-516-512-3133

 Email: [info@creative-biomart.com](mailto:info@creative-biomart.com)     Fax: 1-631-938-8127

 45-1 Ramsey Road, Shirley, NY 11967, USA

SKKEASRRALMGSPQLVAAVVRTMQNTSDLDTARCTTSILH NLSHHREGLLAIFKSG  
 GIPALVRMLSSPVESVLFYAITTLHNLLLYQEGAKMAVRLADGLQKMVPLLKNK NPK  
 FLAITTDCLQLLAYGNQESKLIILANGGPQALVQIMRNYSYEKLLWTTSRVLKVLVSVCP  
 SNKPAIVE AGGMQALGKHLTSNSPRLVQNCLWTLRNLSDVATKQEGLESVLKILVN  
 QLSVDDVNVLT CATGTLSNLTC NNSKNKTLVTQNSGVEALIHAILRAGDKDDITEPAV  
 CALRHLSRHPAEMAQNSVRLNYGIPAIVKLLN QPNQWPLVKATIGLIRNLALCPA  
 NHAPLQEA AVIPRLVQLLVKAHQDAQRHVAAGTQQPYTDGVRMEEIV EGCTGALHI  
 LARDPMNRMEIFRLNTIPLFVQLLYSSVENIQRVAAGVLCCELAQDKEAADAIDAEGAS  
 APL MELLHSRNEGATYAAAVLFRISEDKNPDYRKRVSVELTNSLFFKHDPAAWEAA  
 QSMIPINEPYGDDLDAT  
 YRPMYSSDVPLDPLEMHMDMDGDYPIDTYS DGLRPPYPTADHMLATRTRPLEQKLI  
 SEEDLAANDILDYKDDDDKV

<b>Purity</b>	> 80% as determined by SDS-PAGE and Coomassie blue staining.
<b>Stability</b>	Stable for 12 months from the date of receipt of the product under proper storage and handling conditions. Avoid repeated freeze-thaw cycles.
<b>Storage</b>	Store at -80 centigrade.
<b>Concentration</b>	>50 ug/mL as determined by microplate BCA method.
<b>Preparation</b>	Recombinant protein was captured through anti-DDK affinity column followed by conventional chromatography steps.
<b>Protein Families</b>	Druggable Genome
<b>Protein Pathways</b>	Acute myeloid leukemia, Arrhythmogenic right ventricular cardiomyopathy (ARVC), Pathways in cancer

 Tel: 1-631-559-9269 1-516-512-3133

 Email: [info@creative-biomart.com](mailto:info@creative-biomart.com)  Fax: 1-631-938-8127

 45-1 Ramsey Road, Shirley, NY 11967, USA

Full Length Full L.

## GENE INFORMATION

**Gene Name** JUP junction plakoglobin [ Homo sapiens (human) ]

**Official Symbol** JUP

**Synonyms** PG; DP3; PDGB; PKGB; CTNNG; DPIII

**Gene ID** 3728

**mRNA Refseq** NM\_002230.4

**Protein Refseq** NP\_002221.1

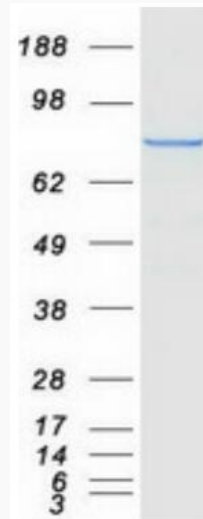
**MIM** 173325

**UniProt ID** P14923

 Tel: 1-631-559-9269 1-516-512-3133

 Email: [info@creative-biomart.com](mailto:info@creative-biomart.com)  Fax: 1-631-938-8127

 45-1 Ramsey Road, Shirley, NY 11967, USA



Coomassie blue staining of purified JUP protein.

 Tel: 1-631-559-9269 1-516-512-3133

 Email: [info@creative-biomart.com](mailto:info@creative-biomart.com)  Fax: 1-631-938-8127

 45-1 Ramsey Road, Shirley, NY 11967, USA