

## Recombinant Mouse Jph2 protein, GST-tagged

Cat. No. Jph2-6844M    Lot. No. (See product label)

### SPECIFICATION

|                         |                                                                                                                                                                                                                                                                                                                                                                                              |
|-------------------------|----------------------------------------------------------------------------------------------------------------------------------------------------------------------------------------------------------------------------------------------------------------------------------------------------------------------------------------------------------------------------------------------|
| <b>Product Overview</b> | Recombinant Mouse Jph2 protein(169-277 aa), fused with N-terminal GST tag, was expressed in E.coli.                                                                                                                                                                                                                                                                                          |
| <b>Species</b>          | Mouse                                                                                                                                                                                                                                                                                                                                                                                        |
| <b>Source</b>           | E.coli                                                                                                                                                                                                                                                                                                                                                                                       |
| <b>ProteinLength</b>    | 169-277 aa                                                                                                                                                                                                                                                                                                                                                                                   |
| <b>Form</b>             | The purified protein was lyophilized from sterile phosphate-buffered saline (PBS: 58 mM Na <sub>2</sub> HPO <sub>4</sub> , 17 mM NaH <sub>2</sub> PO <sub>4</sub> , 68 mM NaCl, pH 8.0). Prior to lyophilization, 5% (w/v) trehalose and 5% (w/v) mannitol were incorporated as cryoprotective excipients. The protein was eluted with a buffer containing 100 mM reduced glutathione (GSH). |
| <b>AASequence</b>       | EHSNGTVAPDSPAADGPMLPSPVPRGGFALLLATAEAARPQGLFTRGTLGRLR<br>RSERTSLGSQRSRLSFLKSELSSGASDAASTGSLAEGAEGPDDAAAPFDADI                                                                                                                                                                                                                                                                                |
| <b>Purity</b>           | 85%, by SDS-PAGE with Coomassie Brilliant Blue staining.                                                                                                                                                                                                                                                                                                                                     |
| <b>Storage</b>          | Store at 2-8°C for 1-2 weeks. Aliquot and store at -20°C to -80°C for up to 3 months, reconstitution with sterile water and addition of an equal volume of glycerol. Avoid repeat freeze-thaw cycles.                                                                                                                                                                                        |
| <b>Reconstitution</b>   | Dissolve the product in 200                                                                                                                                                                                                                                                                                                                                                                  |

 Tel: 1-631-559-9269    1-516-512-3133

 Email: [info@creative-biomart.com](mailto:info@creative-biomart.com)     Fax: 1-631-938-8127

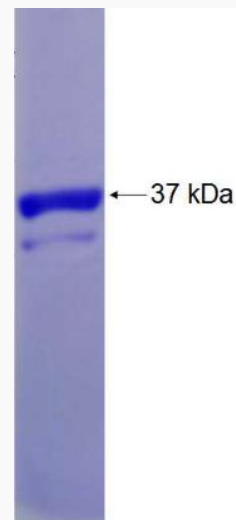
 45-1 Ramsey Road, Shirley, NY 11967, USA

μl sterile water to achieve a working concentration of 0.25 g/μl. If experimental compatibility allows, mix the aqueous solution with an equal volume of glycerol (1:1 ratio) after initial reconstitution.

## GENE INFORMATION

|                        |                                                                                      |
|------------------------|--------------------------------------------------------------------------------------|
| <b>Gene Name</b>       | Jph2 junctophilin 2 [ <i>Mus musculus</i> ]                                          |
| <b>Official Symbol</b> | Jph2                                                                                 |
| <b>Synonyms</b>        | JPH2; junctophilin 2; junctophilin-2; junctophilin type 2; Jp2; JP-2; 1110002E14Rik; |
| <b>Gene ID</b>         | 59091                                                                                |
| <b>mRNA Refseq</b>     | NM_001205076                                                                         |
| <b>Protein Refseq</b>  | NP_001192005                                                                         |

## SDS-PAGE



 Tel: 1-631-559-9269 1-516-512-3133

 Email: [info@creative-biomart.com](mailto:info@creative-biomart.com)  Fax: 1-631-938-8127

 45-1 Ramsey Road, Shirley, NY 11967, USA