

Recombinant Human KAAG1 Protein, Myc/DDK-tagged, C13 and N15-labeled

Cat. No. KAAG1-5942H Lot. No. (See product label)

SPECIFICATION

Product Overview	KAAG1 MS Standard C13 and N15-labeled recombinant protein (NP_851854) with a C-terminal MYC/DDK tag, was expressed in HEK293 cells.
Species	Human
Source	HEK293
Description	KAAG1 (Kidney Associated Antigen 1) is a Protein Coding gene. Diseases associated with KAAG1 include Sclerosing Cholangitis, Neonatal and Deafness, Autosomal Recessive 66.
Molecular Mass	8.8 kDa
AA Sequence	MDDDAAPRVEGVPVAVHKHALHDGLRQVAGPGAAAAHLPRWPPPQLAASRREAP PLSQRPHRTQGAGSPPETNEKLTNPQVKEKTRTRPLEQKLISEEDLAANDILDYKDD DDKV
Purity	> 80% as determined by SDS-PAGE and Coomassie blue staining
Stability	Stable for 3 months from receipt of products under proper storage and handling conditions.
Storage	Store at -80 centigrade. Avoid repeated freeze-thaw cycles.

 Tel: 1-631-559-9269 1-516-512-3133

 Email: info@creative-biomart.com  Fax: 1-631-938-8127

 45-1 Ramsey Road, Shirley, NY 11967, USA

Concentration 50 µg/mL as determined by BCA

Storage Buffer 100 mM glycine, 25 mM Tris-HCl, pH 7.3.

GENE INFORMATION

Gene Name KAAG1 kidney associated antigen 1 [Homo sapiens (human)]

Official Symbol KAAG1

Synonyms KAAG1; kidney associated antigen 1; RU2AS; kidney-associated antigen 1; RU2 antisense gene protein

Gene ID 353219

mRNA Refseq NM_181337

Protein Refseq NP_851854

MIM 608211

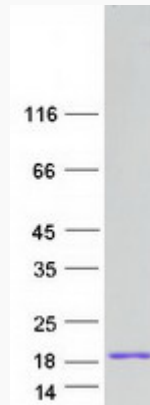
UniProt ID Q9UBP8

 Tel: 1-631-559-9269 1-516-512-3133

 Email: info@creative-biomart.com  Fax: 1-631-938-8127

 45-1 Ramsey Road, Shirley, NY 11967, USA

SDS-PAGE



 Tel: 1-631-559-9269 1-516-512-3133

 Email: info@creative-biomart.com  Fax: 1-631-938-8127

 45-1 Ramsey Road, Shirley, NY 11967, USA