

Recombinant Human KAT2A Protein, His-tagged

Cat. No. KAT2A-005H **Lot. No.** (See product label)

SPECIFICATION

Product Overview	Recombinant Human KAT2A protein (2-837) with a N-terminal His-tag was expressed in Sf21 cells
Species	Human
Source	Insect Cells
Protein Length	2-837
Description	KAT2A, or GCN5, is a histone acetyltransferase (HAT) that functions primarily as a transcriptional activator. It also functions as a repressor of NF-kappa-B by promoting ubiquitination of the NF-kappa-B subunit RELA in a HAT-independent manner.
Molecular Mass	96.3 kDa
Purity	≥50 % (estimated by SDS-PAGE)
Unit Definition	One unit is defined as the amount of enzyme required to convert 1 nmol of acetyl-CoA to reduced Coenzyme A (CoASH) per minute at 37 centigrade in 100 mM HEPES, pH 7.5, containing 0.8% polysorbate 20. CoASH produced in the reaction is measured fluorometrically using HAT Inhibitor Screening Assay Kit with 100 μM histone H3 peptide (1-21) as the acetyl acceptor.
Stability	≥ 2 years

 Tel: 1-631-559-9269 1-516-512-3133

 Email: info@creative-biomart.com  Fax: 1-631-938-8127

 45-1 Ramsey Road, Shirley, NY 11967, USA

Storage	-80 centigrade
Storage Buffer	50 mM Tris-HCl, pH 8.0, containing 150 mM sodium chloride and 20% glycerol
Shipping	Dry ice in continental US, may vary elsewhere.

GENE INFORMATION

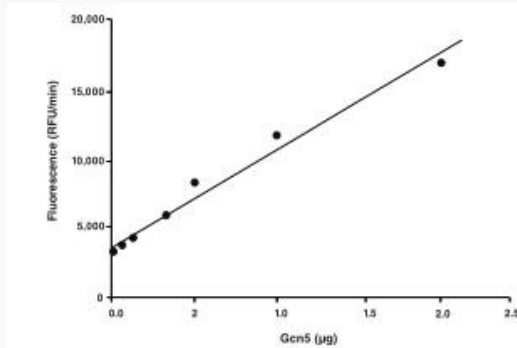
Gene Name	KAT2A lysine acetyltransferase 2A [Homo sapiens (human)]
Official Symbol	KAT2A
Synonyms	KAT2A; lysine acetyltransferase 2A; GCN5; hGCN5; GCN5L2; PCAF-b; histone acetyltransferase KAT2A; GCN5 (general control of amino-acid synthesis, yeast, homolog)-like 2; General control of amino acid synthesis, yeast, homolog-like 2 K(lysine) acetyltransferase 2A; STAF97; general control of amino acid synthesis protein 5-like 2; histone acetyltransferase GCN5; histone glutaryltransferase KAT2A; histone succinyltransferase KAT2A; hsGCN5; EC 2.3.1.48
Gene ID	2648
mRNA Refseq	NM_021078
Protein Refseq	NP_066564
MIM	602301
UniProt ID	Q92830

 Tel: 1-631-559-9269 1-516-512-3133

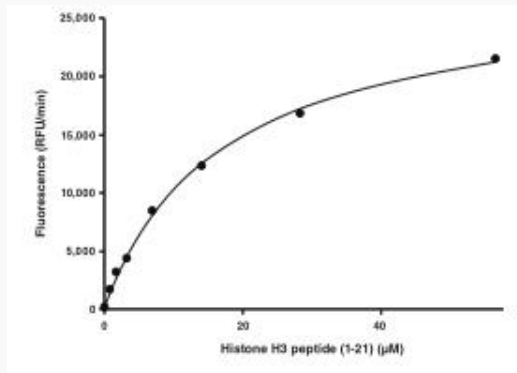
 Email: info@creative-biomart.com  Fax: 1-631-938-8127

 45-1 Ramsey Road, Shirley, NY 11967, USA

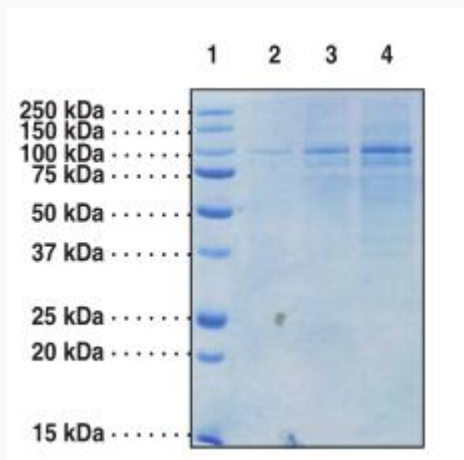
Gcn5 enzyme titration



Histone H3 (1-21) peptide titration



SDS-PAGE analysis of KAT2A.



Tel: 1-631-559-9269 1-516-512-3133

Email: info@creative-biomart.com Fax: 1-631-938-8127

45-1 Ramsey Road, Shirley, NY 11967, USA




Lane 1: MW Markers


Lane 2: Gcn5 (1 g)

Lane 3: Gcn5 (2 g)

Lane 4: Gcn5 (4 g)

 Tel: 1-631-559-9269 1-516-512-3133

 Email: info@creative-biomart.com  Fax: 1-631-938-8127

 45-1 Ramsey Road, Shirley, NY 11967, USA