

Recombinant Human lysine acetyltransferase 2A Protein, His tagged

Cat. No. KAT2A-080H Lot. No. (See product label)

SPECIFICATION

Product Overview

Recombinant human KAT2A/GCN5 protein (Q92830) (Gly 497-Thr 662) with a His tag at the N-terminus and a His tag at the C-terminus was expressed in E. coli.

Species

Human

Source

E.coli

ProteinLength

497-662aa

Description

Protein lysine acyltransferase that can act as a acetyltransferase, glutaryltransferase, succinyltransferase or malonyltransferase, depending on the context. Acts as a histone lysine succinyltransferase: catalyzes succinylation of histone H3 on 'Lys-79' (H3K79succ), with a maximum frequency around the transcription start sites of genes. Succinylation of histones gives a specific tag for epigenetic transcription activation. Association with the 2-oxoglutarate dehydrogenase complex, which provides succinyl-CoA, is required for histone succinylation. In different complexes, functions either as an acetyltransferase (HAT) or as a succinyltransferase: in the SAGA and ATAC complexes, acts as a histone acetyltransferase. Has significant histone acetyltransferase activity with core histones, but not with nucleosome core particles. Acetylation of histones gives a specific tag for epigenetic transcription activation. Recruited by the XPC complex at promoters, where it specifically mediates acetylation of histone variant H2A.Z.1/H2A.Z, thereby promoting expression of target genes.

 Tel: 1-631-559-9269 1-516-512-3133

 Email: info@creative-biomart.com  Fax: 1-631-938-8127

 45-1 Ramsey Road, Shirley, NY 11967, USA

Tag	N-His and C-His
Molecular Mass	20.9 kDa
Endotoxin	Less than 1.0 EU/μg by the LAL method.
Purity	>95% as determined by SDS-PAGE.
Storage	Please avoid repeated freeze-thaw cycles. Samples are stable for up to twelve months from date of receipt at -20 to -80 centigrade. It is recommended that aliquot the reconstituted solution to minimize freeze-thaw cycles.
Storage Buffer	Lyophilized from a 0.2 μm filtered solution of PBS, pH7.4, 5% Trehalose, 5% mannitol.
Reconstitution	Reconstitute at 250 μg/mL in sterile water.
GENE INFORMATION	
Gene Name	KAT2A lysine acetyltransferase 2A [Homo sapiens (human)]
Official Symbol	KAT2A
Synonyms	KAT2A; K(lysine) acetyltransferase 2A; GCN5 general control of amino acid synthesis 5 like 2 (yeast), GCN5L2; histone acetyltransferase KAT2A; GCN5; PCAF b; STAF97; hsGCN5; lysine acetyltransferase 2A; histone acetyltransferase GCN5; general control of amino acid synthesis protein 5-like 2; General control of amino acid synthesis, yeast, homolog-like 2; GCN5 (general control of amino-acid synthesis, yeast, homolog)-like 2; hGCN5; GCN5L2; PCAF-b; MGC102791;
Gene ID	2648

 Tel: 1-631-559-9269 1-516-512-3133

 Email: info@creative-biomart.com  Fax: 1-631-938-8127

 45-1 Ramsey Road, Shirley, NY 11967, USA

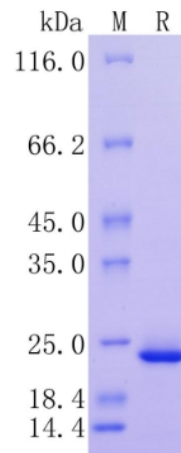
mRNA Refseq [NM_021078](#)

Protein Refseq [NP_066564](#)

MIM [602301](#)

UniProt ID [Q92830](#)

Protein on SDS-PAGE under reducing (R) condition.



Tel: 1-631-559-9269 1-516-512-3133

Email: info@creative-biomart.com Fax: 1-631-938-8127

45-1 Ramsey Road, Shirley, NY 11967, USA