

Recombinant Human KAT2A protein, GST-tagged

Cat. No. KAT2A-5765H Lot. No. (See product label)

SPECIFICATION

Product Overview	Recombinant Human KAT2A protein(366-449 aa), fused with N-terminal GST tag, was expressed in E.coli.
Species	Human
Source	E.coli
ProteinLength	366-449 aa
Form	The purified protein was lyophilized from sterile phosphate-buffered saline (PBS: 58 mM Na ₂ HPO ₄ , 17 mM NaH ₂ PO ₄ , 68 mM NaCl, pH 8.0). Prior to lyophilization, 5% (w/v) trehalose and 5% (w/v) mannitol were incorporated as cryoprotective excipients. The protein was eluted with a buffer containing 100 mM reduced glutathione (GSH).
AASequence	EIYGANSPIWESGFTMPPSEGTLVPRPASVSAAVVPSTPIFSPSMGGGSNSSLSD SAGAEPMPGEKRTLPELNTLEDAKRLR
Purity	85%, by SDS-PAGE with Coomassie Brilliant Blue staining.
Storage	Store at 2-8°C for 1-2 weeks. Aliquot and store at -20°C to -80°C for up to 3 months, reconstitution with sterile water and addition of an equal volume of glycerol. Avoid repeat freeze-thaw cycles.
Reconstitution	Dissolve the product in 200

 Tel: 1-631-559-9269 1-516-512-3133

 Email: info@creative-biomart.com  Fax: 1-631-938-8127

 45-1 Ramsey Road, Shirley, NY 11967, USA

µl sterile water to achieve a working concentration of 0.25 g/µl. If experimental compatibility allows, mix the aqueous solution with an equal volume of glycerol (1:1 ratio) after initial reconstitution.

GENE INFORMATION

Gene Name KAT2A K(lysine) acetyltransferase 2A [Homo sapiens]

Official Symbol KAT2A

Synonyms

KAT2A; K(lysine) acetyltransferase 2A; GCN5 general control of amino acid synthesis 5 like 2 (yeast) , GCN5L2; histone acetyltransferase KAT2A; GCN5; PCAF b; STAF97; hsGCN5; lysine acetyltransferase 2A; histone acetyltransferase GCN5; general control of amino acid synthesis protein 5-like 2; General control of amino acid synthesis, yeast, homolog-like 2; GCN5 (general control of amino-acid synthesis, yeast, homolog)-like 2; hGCN5; GCN5L2; PCAF-b; MGC102791;

Gene ID 2648

mRNA Refseq NM_021078

Protein Refseq NP_066564

MIM 602301

UniProt ID Q92830

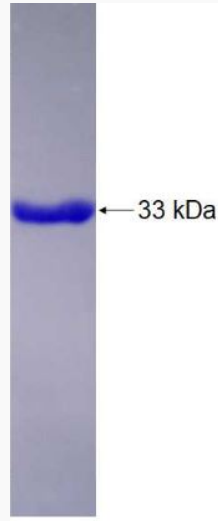
 Tel: 1-631-559-9269 1-516-512-3133

 Email: info@creative-biomart.com  Fax: 1-631-938-8127

 45-1 Ramsey Road, Shirley, NY 11967, USA



SDS-PAGE



Tel: 1-631-559-9269 1-516-512-3133

Email: info@creative-biomart.com Fax: 1-631-938-8127

45-1 Ramsey Road, Shirley, NY 11967, USA