

## Recombinant Human KAT2B Protein, His-tagged

**Cat. No.** KAT2B-152H    **Lot. No.** (See product label)

### SPECIFICATION

<b>Product Overview</b>	Recombinant Human KAT2B fused with His tag was produced in Insect cells.
<b>Species</b>	Human
<b>Source</b>	Insect Cells
<b>Description</b>	CBP and p300 are large nuclear proteins that bind to many sequence-specific factors involved in cell growth and/or differentiation, including c-jun and the adenoviral oncoprotein E1A. The protein encoded by this gene associates with p300/CBP. It has in vitro and in vivo binding activity with CBP and p300, and competes with E1A for binding sites in p300/CBP. It has histone acetyl transferase activity with core histones and nucleosome core particles, indicating that this protein plays a direct role in transcriptional regulation.
<b>Form</b>	50mM Tris-HCl, pH 8.0, 250mM NaCl
<b>Molecular Mass</b>	100KDa
<b>AA sequence</b>	MSEAGGAGPGGCGAGAGAGAGPGALPPQPAALPPAPPQGSPCAAAGGSGACG PATAVAAAGTAEGPGGGGSARIAVKKQLRSAPRAKKLEKLGVYSACKAEESCKCN GWKNPNPSPTPPRADLQQIIVSLTESCRSCSHALAAHVSHLENVSEEEEMNRLLGIVL DVEYLFTCVHKEEDADTKQVYFYLFKLLRKSILQRGKPVVEGSLEKKPPFEKPSIEQG VNNFVQYKFSHLPAKERQTIVELAKMFLNRINYWHLEAPSQRRLRSPNDDISGYKEN YTRWLCYCNVPQFCDSLPRYETTQVFGRTLRSVFTVMRRQLLEQARQEKDKLPLE KRTLILTHFPKFLSMLEEEVYSQNSPIWDQDFLSASSRSTSQLGIQTVINPPPVAGTISY

 Tel: 1-631-559-9269    1-516-512-3133

 Email: [info@creative-biomart.com](mailto:info@creative-biomart.com)     Fax: 1-631-938-8127

 45-1 Ramsey Road, Shirley, NY 11967, USA

NSTSSSLEQPNAGSSSPACKASSGLEANPGEKRKMTDSHVLEEAKKPRVMGDIPM  
 ELINEVMSTITDPAAMLGPETNFLSAHSARDEAARLEERRGVIEFHVVGNSLNQKPN  
 KKILMWLVGLQNVFSQLPRMPKEYITRLVFDPKHKTALIKDGRVIGGICFRMFPSQ  
 GFTEIVFCAVTSNEQVKGYGTHLMNHLKEYHIKHDILNFLTAYADEYAIGYFKKQGFSK  
 EIKIPKTKYVGYIKDYEGATLMGCELNPRIPYTEFSVIIKKQKEIIKKLIERKQAQIRKVY  
 PGLSCFKDGVQRPIESIPGIRETGWKPSGKEKSKEPRDPDQLYSTLKSILQQVKSHQ  
 SAWPFMEPVKRTEAPGYEVIRFPMDLKTMSERLKNRYVSKKLFMADLQRVFTNC  
 KEYNPPESEYYKCANILEKFFFSKIKEAGLIDK

**Purity** >90% as determined by SDS-PAGE

**Storage** Short Term Storage at +4 centigrade, Long Term Storage at -20 centigrade to -80 centigrade. Avoid freeze/thaw cycles.

## GENE INFORMATION

**Gene Name** [KAT2B K\(lysine\) acetyltransferase 2B \[ Homo sapiens \]](#)

**Official Symbol** [KAT2B](#)

**Synonyms** KAT2B; K(lysine) acetyltransferase 2B; p300/CBP associated factor , PCAF; histone acetyltransferase KAT2B; GCN5; GCN5L; P/CAF; histone acetylase PCAF; CREBBP-associated factor; p300/CBP-associated factor; lysine acetyltransferase 2B; histone acetyltransferase PCAF; P; CAF; PCAF;

**Gene ID** [8850](#)

**mRNA Refseq** [NM\\_003884](#)

**Protein Refseq** [NP\\_003875](#)

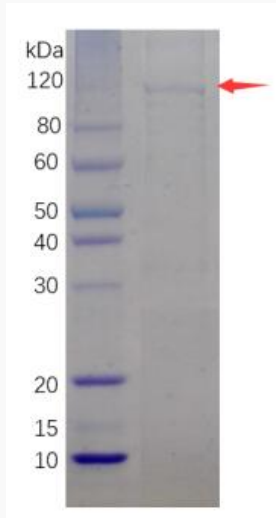
 Tel: 1-631-559-9269 1-516-512-3133

 Email: [info@creative-biomart.com](mailto:info@creative-biomart.com)  Fax: 1-631-938-8127

 45-1 Ramsey Road, Shirley, NY 11967, USA

MIM 602303

UniProt ID Q92831



 Tel: 1-631-559-9269 1-516-512-3133

 Email: [info@creative-biomart.com](mailto:info@creative-biomart.com)  Fax: 1-631-938-8127

 45-1 Ramsey Road, Shirley, NY 11967, USA