

Recombinant Human KAT2B Protein, His-tagged

Cat. No. KAT2B-2353H Lot. No. (See product label)

SPECIFICATION

Product Overview	Recombinant Human KAT2B Protein (Ala643-Lys832) with a N-His tag was expressed in E. coli.
Species	Human
Source	E.coli
ProteinLength	Ala643-Lys832
Description	CBP and p300 are large nuclear proteins that bind to many sequence-specific factors involved in cell growth and/or differentiation, including c-jun and the adenoviral oncoprotein E1A. The protein encoded by this gene associates with p300/CBP. It has in vitro and in vivo binding activity with CBP and p300, and competes with E1A for binding sites in p300/CBP. It has histone acetyl transferase activity with core histones and nucleosome core particles, indicating that this protein plays a direct role in transcriptional regulation.
Form	Freeze-dried powder
Molecular Mass	Predicted Molecular Mass: 26 kDa Accurate Molecular Mass: 26 kDa
Endotoxin	<1.0 EU per 1g (determined by the LAL method).
Purity	> 95%

 Tel: 1-631-559-9269 1-516-512-3133

 Email: info@creative-biomart.com  Fax: 1-631-938-8127

 45-1 Ramsey Road, Shirley, NY 11967, USA

Applications	Positive Control; Immunogen; SDS-PAGE; WB.
Stability	The thermal stability is described by the loss rate. The loss rate was determined by accelerated thermal degradation test, that is, incubate the protein at 37 centigrade for 48h, and no obvious degradation and precipitation were observed. The loss rate is less than 5% within the expiration date under appropriate storage condition.
Storage	Avoid repeated freeze/thaw cycles. Store at 2-8 centigrade for one month. Aliquot and store at -80 centigrade for 12 months.
Storage Buffer	PBS, pH7.4, containing 0.01% SKL, 1mM DTT, 5% Trehalose and Proclin300.
Reconstitution	Reconstitute in 10mM PBS (pH7.4) to a concentration of 0.1-1.0 mg/mL. Do not vortex.

GENE INFORMATION

Gene Name	KAT2B K(lysine) acetyltransferase 2B [Homo sapiens (human)]
Official Symbol	KAT2B
Synonyms	KAT2B; K(lysine) acetyltransferase 2B; p300/CBP associated factor, PCAF; histone acetyltransferase KAT2B; GCN5; GCN5L; P/CAF; histone acetylase PCAF; CREBBP-associated factor; p300/CBP-associated factor; lysine acetyltransferase 2B; histone acetyltransferase PCAF; P; CAF; PCAF;
Gene ID	8850
mRNA Refseq	NM_003884
Protein Refseq	NP_003875

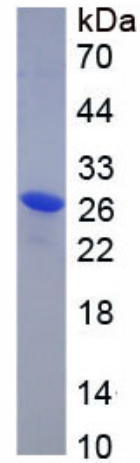
 Tel: 1-631-559-9269 1-516-512-3133

 Email: info@creative-biomart.com  Fax: 1-631-938-8127

 45-1 Ramsey Road, Shirley, NY 11967, USA

MIM 602303

UniProt ID Q92831



 Tel: 1-631-559-9269 1-516-512-3133

 Email: info@creative-biomart.com  Fax: 1-631-938-8127

 45-1 Ramsey Road, Shirley, NY 11967, USA