

Recombinant Human full length KAT2B protein, FLAG-tagged

Cat. No. KAT2B-2827H Lot. No. (See product label)

SPECIFICATION

Product Overview	Recombinant Human full length KAT2B protein(accession number NP_003875.3) was expressed in Insect Cell with an N-terminal FLAG-Tag.
Species	Human
Source	Insect Cells
ProteinLength	Full Length
Form	Supplied in 25 mM HEPES-NaOH pH 7.5, 300 mM NaCl, 10% glycerol, 0.04% Triton X-100, and 0.5 mM TCEP
Bio-activity	0.5 µg Histone H4 was incubated with 0 µg (-), 0.5 µg (+) PCAF in a 20 µl reaction system for 2 hours at room temperature. Half of each reaction was run on a 13% SDS-PAGE gel, and products were detected by Western blot. H4ac (pan-acetyl) antibody was used to recognize acetylated histone H4.
Molecular Mass	94.3 kDa
Purity	>80%
Storage	Recombinant proteins in solution are temperature sensitive and must be stored at -80°C to prevent degradation. Avoid repeated freeze/thaw cycles and keep on ice when not in storage.

 Tel: 1-631-559-9269 1-516-512-3133

 Email: info@creative-biomart.com  Fax: 1-631-938-8127

 45-1 Ramsey Road, Shirley, NY 11967, USA

Reconstitution It is recommended that sterile water be added to the vial to prepare a stock solution of 0.2 ug/ul. Centrifuge the vial at 4°C before opening to recover the entire contents.

GENE INFORMATION

Gene Name KAT2B K(lysine) acetyltransferase 2B [Homo sapiens]

Official Symbol KAT2B

Synonyms KAT2B; K(lysine) acetyltransferase 2B; p300/CBP associated factor , PCAF; histone acetyltransferase KAT2B; GCN5; GCN5L; P/CAF; histone acetylase PCAF; CREBBP-associated factor; p300/CBP-associated factor; lysine acetyltransferase 2B; histone acetyltransferase PCAF; P; CAF; PCAF;

Gene ID 8850

mRNA Refseq NM_003884

Protein Refseq NP_003875

MIM 602303

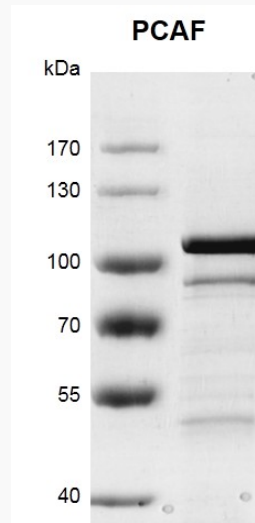
UniProt ID Q92831

 Tel: 1-631-559-9269 1-516-512-3133

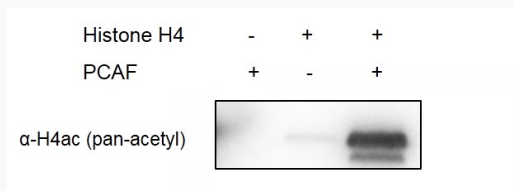
 Email: info@creative-biomart.com  Fax: 1-631-938-8127

 45-1 Ramsey Road, Shirley, NY 11967, USA

SDS-PAGE



Activity



Tel: 1-631-559-9269 1-516-512-3133

Email: info@creative-biomart.com Fax: 1-631-938-8127

45-1 Ramsey Road, Shirley, NY 11967, USA