

Recombinant Human KAT2B Protein, Myc/DDK-tagged, C13 and N15-labeled

Cat. No. KAT2B-4195H **Lot. No.** (See product label)

SPECIFICATION

Product Overview	KAT2B MS Standard C13 and N15-labeled recombinant protein (NP_003875) with a C-terminal MYC/DDK tag, was expressed in HEK293 cells.
Species	Human
Source	HEK293
Description	CBP and p300 are large nuclear proteins that bind to many sequence-specific factors involved in cell growth and/or differentiation, including c-jun and the adenoviral oncoprotein E1A. The protein encoded by this gene associates with p300/CBP. It has in vitro and in vivo binding activity with CBP and p300, and competes with E1A for binding sites in p300/CBP. It has histone acetyl transferase activity with core histones and nucleosome core particles, indicating that this protein plays a direct role in transcriptional regulation.
Molecular Mass	92.8 kDa
AA Sequence	MSEAGGAGPGGCGAGAGAGAGPGALPPQPAALPPAPPQGSPCAAAGGSGACG PATAVAAAGTAEGPGGGGSARIAVKKAQLRSAPRAKLEKLGVYSACKAEESCKCN GWKNPNPSPTPPRADLQQIIVSLTESCRSCSHALAAHVSHLENVSEEMNRLLGIVL DVEYLFTCVHKEEDADTKQVYFYLFKLLRKSILQRGKPVVEGSLEKKPPFEKPSIEQG VNNFVQYKFSHLPAKERQTIVELAKMFLNRINYWHLEAPSQRRLRSPNDDISGYKEN YTRWLCYCNVPQFCDSLPRYETTQVFGRTLRSVFTVMRRQLLEQARQEKDKLPLE

 Tel: 1-631-559-9269 1-516-512-3133

 Email: info@creative-biomart.com  Fax: 1-631-938-8127

 45-1 Ramsey Road, Shirley, NY 11967, USA

KRTLILTHFPKFLSMLEEEVYSQNSPIWDQDFLSASSRSTSQLGIQTVINPPPVAGTISY
 NSTSSSLEQPNAGSSSPACKASSGLEANPGEKRKMTDShVLEEAKKPRVMGDIPM
 ELINEVMSTITDPAAMLGPETNFLSAHSARDEAARLEERRGVIEFHVVGNSLNQKPN
 KKILMWLVGLQNVFSQLPRMPKEYITRLVDFPKHKTALAIKDGRVIGGICFRMFPSQ
 GFTEIVFCAVTSNEQVKGYGTHLMNHLKEYHIKHDILNFLTyaDEYAIGYFKKQGFSK
 EIKIPKTKYVGYIKDYEGATLMGCELNPRIPTYTEFSViiKKQKEiIKKLIERKQAQIRKVV
 PGLSCFKDGVRQIPIESIPGIRETGWKPSGKEKSKEPRDPDQLYSTLKSILQQVKSHQ
 SAWPFMEPVKRTEAPGYEYEVIRFPMDLKTMSERLKNRYVVSkkLFMADLQRVFTNC
 KEYNPPeSEYYKCANILEKFFFSKIKEAGLIDKTRTRPLEQKLISEEDLAANDILDYKDD
 DDKV

Purity > 80% as determined by SDS-PAGE and Coomassie blue staining

Stability Stable for 3 months from receipt of products under proper storage and handling conditions.

Storage Store at -80 centigrade. Avoid repeated freeze-thaw cycles.

Concentration 50 µg/mL as determined by BCA

Storage Buffer 100 mM glycine, 25 mM Tris-HCl, pH 7.3.

GENE INFORMATION

Gene Name KAT2B lysine acetyltransferase 2B [Homo sapiens (human)]

Official Symbol KAT2B

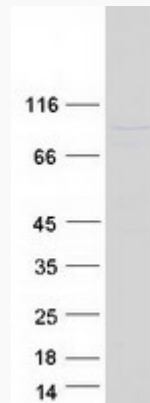
Synonyms KAT2B; K(lysine) acetyltransferase 2B; p300/CBP associated factor, PCAF; histone acetyltransferase KAT2B; GCN5; GCN5L; P/CAF; histone acetylase PCAF; CREBBP-associated factor; p300/CBP-associated factor; lysine acetyltransferase 2B; histone

 Tel: 1-631-559-9269 1-516-512-3133

 Email: info@creative-biomart.com  Fax: 1-631-938-8127

 45-1 Ramsey Road, Shirley, NY 11967, USA

acetyltransferase PCAF; P; CAF; PCAF;

Gene ID 8850**mRNA Refseq** NM_003884**Protein Refseq** NP_003875**MIM** 602303**UniProt ID** Q92831**SDS-PAGE** Tel: 1-631-559-9269 1-516-512-3133 Email: info@creative-biomart.com  Fax: 1-631-938-8127 45-1 Ramsey Road, Shirley, NY 11967, USA