

## Recombinant Human KAT2B Protein, His-tagged

Cat. No. KAT2B-8485H Lot. No. (See product label)

### SPECIFICATION

|                         |  |
|-------------------------|--|
| <b>Product Overview</b> | Recombinant Human KAT2B Protein(NP_003875.3), fused to His-tag, was expressed in HEK293.   |
| <b>Species</b>          | Human  |
| <b>Source</b>           | HEK293   |
| <b>Description</b>      | CBP and p300 are large nuclear proteins that bind to many sequence-specific factors involved in cell growth and/or differentiation, including c-jun and the adenoviral oncoprotein E1A. The protein encoded by this gene associates with p300/CBP. It has in vitro and in vivo binding activity with CBP and p300, and competes with E1A for binding sites in p300/CBP. It has histone acetyl transferase activity with core histones and nucleosome core particles, indicating that this protein plays a direct role in transcriptional regulation. |
| <b>Form</b>             | Supplied as a 0.2 µm filtered solution in PBS, pH 7.4  |
| <b>Molecular Mass</b>   | ~ 95 kDa, reducing condition.  |
| <b>AA Sequence</b>      | MSEAGGAGPGGCGAGAGAGAGPGALPPQPAALPPAPPQGSPCAAAGGSGACG<br>PATAVAAAGTAEGPGGGGSARIAVKKAKLRSAPRAKKLEKLGVYSACKAEESCKCN<br>GWKNPNPSPTPPRADLQQIIVSLTESCRSCSHALAAHVSHLENVSEEEMNRLLGIVL<br>DVEYLFTCVHKEEDADTKQVYFYLFKLLRKSILQRGKPVVEGSLEKKPPFEKPSIEQG<br>VNNFVQYKFSHLPAKERQTIVELAKMFLNRINYWHLEAPSQRRLRSPNDDISGYKEN<br>YTRWLCYCNVPQFCDSLPRYETTQVFGRTLRSVFTVMRRQLLEQARQEKDKLPLE  |

 Tel: 1-631-559-9269 1-516-512-3133

 Email: [info@creative-biomart.com](mailto:info@creative-biomart.com)  Fax: 1-631-938-8127

 45-1 Ramsey Road, Shirley, NY 11967, USA

KRTLILTHFPKFLSMLEEEVYSQNSPIWDQDFLSASSRTSQLGIQTVINPPPVAGTISY  
 NSTSSSLEQPNAAGSSSPACKASSGLEANPGEKRKMTDSHVLEEAKKPRVMGDIPM  
 ELINEVMSTITDPAAMLGPETNFLSAHSARDEAARLEERRGVIEFHVVGNSLNQKPN  
 KKILMWLVGLQNVFSQLPRMPKEYITRLVDFPKHKTALAIKDGRVIGGICFRMFPSQ  
 GFTEIVFCAVTSNEQVKGYGTHLMNHLKEYYHIKHDILNFLTAYADEYAIGYFKKQGFSK  
 EIKIPKTKYVGYIKDYEGATLMGCELNPRIPTYTEFSVIIKKQKEIIKKLIERKQAQIRKVY  
 PGLSCFKDGVRQIPIESIPGIRETGWKPSGKEKSKEPRDPDQLYSTLKSILQQVKSHQ  
 SAWPFMEPVKRTEAPGYEYEVIRFPMDLKTMSERLKNRYVSKKLFMADLQRVFTNC  
 KEYNPPPESEYYKCANILEKFFFSKIKEAGLIDKHHHHHHHHHHH

|                      |   |
|----------------------|---|
| <b>Endotoxin</b>     | Less than 1.0 EU per ug by the LAL method   |
| <b>Purity</b>        | >80%, by SDS-PAGE   |
| <b>Storage</b>       | Store it under sterile conditions at -20 to -80 °C. It is recommended that the protein be aliquoted for optimal storage. Avoid repeated freeze-thaw cycles. |
| <b>Concentration</b> | 0.1 mg/ml   |

## GENE INFORMATION

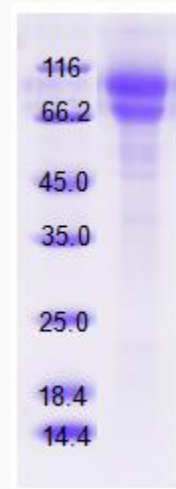
|                        |  |
|------------------------|--|
| <b>Gene Name</b>       | KAT2B lysine acetyltransferase 2B [ Homo sapiens (human) ] |
| <b>Official Symbol</b> | KAT2B  |
| <b>Synonyms</b>        | CAF; PCAF; P/CAF   |
| <b>Gene ID</b>         | 8850   |
| <b>mRNA Refseq</b>     | NM_003884.5  |

**Protein Refseq** NP\_003875.3

**MIM** 602303

**UniProt ID** Q92831

**SDS-PAGE of  
KAT2B-8485H**



 Tel: 1-631-559-9269 1-516-512-3133

 Email: [info@creative-biomart.com](mailto:info@creative-biomart.com)  Fax: 1-631-938-8127

 45-1 Ramsey Road, Shirley, NY 11967, USA