

Recombinant Human KAT5 Protein, His-tagged

Cat. No. KAT5-021H Lot. No. (See product label)

SPECIFICATION

Product Overview Recombinant Human KAT5 protein (2-513) with a N-terminal His-tag was expressed in Sf21 cells.

Species Human

Source Insect Cells

ProteinLength 2-513

Description The protein encoded by this gene belongs to the MYST family of histone acetyl transferases (HATs) and was originally isolated as an HIV-1 TAT-interactive protein. HATs play important roles in regulating chromatin remodeling, transcription and other nuclear processes by acetylating histone and nonhistone proteins. This protein is a histone acetylase that has a role in DNA repair and apoptosis and is thought to play an important role in signal transduction. Alternative splicing of this gene results in multiple transcript variants.

Molecular Mass 60.3 kDa

Purity ≥50% estimated by SDS-PAGE

Unit Definition One unit is defined as the amount of enzyme required to produce 1 pmole of methylated peptide per minute at 37 centigrade in 100 mM HEPES, pH 7.5, 0.8% Triton X-100 containing 100 μM histone H4 peptide, and acetyl-CoA. Activity was determined using HAT Inhibitor.

 Tel: 1-631-559-9269 1-516-512-3133

 Email: info@creative-biomart.com  Fax: 1-631-938-8127

 45-1 Ramsey Road, Shirley, NY 11967, USA

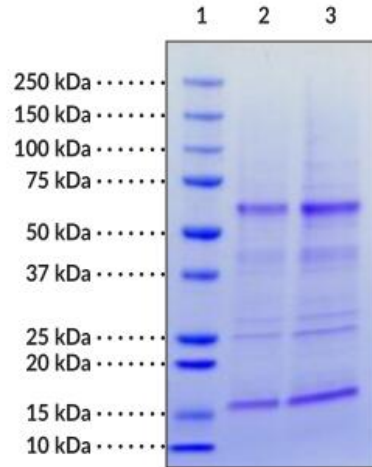
| | |
|-------------------------|---|
| Stability | ≥ 6 months |
| Storage | -80 centigrade |
| Storage Buffer | 50 mM Tris-HCl, pH 7.5, with 300 mM sodium chloride and 10% glycerol |
| GENE INFORMATION | |
| Gene Name | KAT5 lysine acetyltransferase 5 [Homo sapiens (human)] |
| Official Symbol | KAT5 |
| Synonyms | KAT5; lysine acetyltransferase 5; TIP; ESA1; PLIP; TIP60; cPLA2; HTATIP; ZC2HC5; HTATIP1; histone acetyltransferase KAT5; 60 kDa Tat-interactive protein; HIV-1 Tat interactive protein, 60kDa; K(lysine) acetyltransferase 5; K-acetyltransferase 5; Tat interacting protein, 60kDa; cPLA(2)-interacting protein; cPLA2 interacting protein; histone acetyltransferase HTATIP; EC 2.3.1.48 |
| Gene ID | 10524 |
| mRNA Refseq | NM_001206833 |
| Protein Refseq | NP_001193762 |
| MIM | 601409 |
| UniProt ID | Q92993 |

 Tel: 1-631-559-9269 1-516-512-3133

 Email: info@creative-biomart.com  Fax: 1-631-938-8127

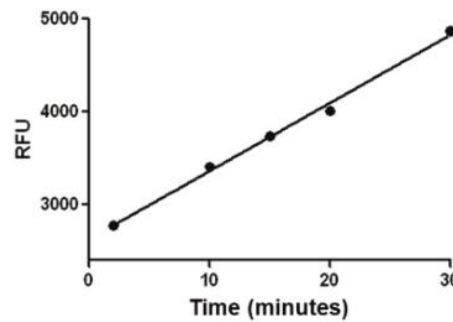
 45-1 Ramsey Road, Shirley, NY 11967, USA

**SDS-PAGE Analysis
of KAT5.**



Lane 1: MW Markers
Lane 2: TIP60 (2 μ g)
Lane 3: TIP60 (4 μ g)

**TIP60 acetylates the
Histone H4 peptide**



 Tel: 1-631-559-9269 1-516-512-3133

 Email: info@creative-biomart.com  Fax: 1-631-938-8127

 45-1 Ramsey Road, Shirley, NY 11967, USA