

Recombinant Human KAT5 Protein, GST-tagged

Cat. No. KAT5-5258H Lot. No. (See product label)

SPECIFICATION

Product Overview	Human HTATIP full-length ORF (AAH00166, 1 a.a. - 461 a.a.) recombinant protein with GST-tag at N-terminal.
Species	Human
Source	Wheat Germ
Description	The protein encoded by this gene belongs to the MYST family of histone acetyl transferases (HATs) and was originally isolated as an HIV-1 TAT-interactive protein. HATs play important roles in regulating chromatin remodeling, transcription and other nuclear processes by acetylating histone and nonhistone proteins. This protein is a histone acetylase that has a role in DNA repair and apoptosis and is thought to play an important role in signal transduction. Alternative splicing of this gene results in multiple transcript variants. [provided by RefSeq]
Molecular Mass	76.34 kDa
AA Sequence	MAEVGEIIEGCRLPVLRRNQDNEDEWPLAEILSVKDISGRKLFYVHYIDFNKRLDEWV THERLDLKKIQFPPKKEAKTPTKNGPLGSRPGSPEREVVRKVEVVS PATPVPSETAPA SVFPQNGAARRAVAAQPGRKRKSNCLGTDEDSQDSSDGIPSAPRMTGSLVSDRSH DDIVTRMKNIECIELGRHRLKPWYFSPYPQELTTLPLVLYLCEFCLKYGRSLKCLQRHL TKCDLRHPPGNEIYRKG TISFFEIDGRKNKSYSQNLCLLAKCFLDHKTLYYDTPFLF YVMTEYDCKGFHIVGYFSKEKESTEDYNVACILTPPYQRRGYGKLLIEFSYELSKVE GKTGTPEKPLSDLGLLSYRSYWSQTILEILMGLKSESGERPQITINEISEITSIKKEDVIS

 Tel: 1-631-559-9269 1-516-512-3133

 Email: info@creative-biomart.com  Fax: 1-631-938-8127

 45-1 Ramsey Road, Shirley, NY 11967, USA

TLQYLNLINYYKGQYILTLSEDIVDGHARAMLKRLLRIDSKCLHFTPDKDWSKRGKW

Applications

Enzyme-linked Immunoabsorbent Assay
 Western Blot (Recombinant protein)
 Antibody Production
 Protein Array

Notes

Best use within three months from the date of receipt of this protein.

Storage

Store at -80 centigrade. Aliquot to avoid repeated freezing and thawing.

Storage Buffer

50 mM Tris-HCl, 10 mM reduced Glutathione, pH=8.0 in the elution buffer.

GENE INFORMATION

Gene Name

[KAT5 K\(lysine\) acetyltransferase 5 \[Homo sapiens \]](#)

Official Symbol

[KAT5](#)

Synonyms

KAT5; K(lysine) acetyltransferase 5; HIV 1 Tat interactive protein, 60kDa , HTATIP; histone acetyltransferase KAT5; cPLA2; ESA1; HTATIP1; K acetyltransferase 5; PLIP; Tat interacting protein; 60kDa; TIP60; K-acetyltransferase 5; cPLA2 interacting protein; lysine acetyltransferase 5; cPLA(2)-interacting protein; 60 kDa Tat-interactive protein; Tat interacting protein, 60kDa; histone acetyltransferase HTATIP; HIV-1 Tat interactive protein, 60kDa; TIP; HTATIP;

Gene ID

[10524](#)

mRNA Refseq

[NM_001206833](#)

Protein Refseq

[NP_001193762](#)

 Tel: 1-631-559-9269 1-516-512-3133

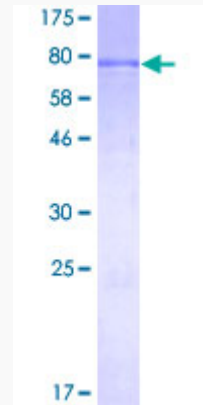
 Email: info@creative-biomart.com  Fax: 1-631-938-8127

 45-1 Ramsey Road, Shirley, NY 11967, USA

MIM 601409

UniProt ID Q92993

**Quality Control
Testing**



12.5% SDS-PAGE Stained with Coomassie Blue

 Tel: 1-631-559-9269 1-516-512-3133

 Email: info@creative-biomart.com  Fax: 1-631-938-8127

 45-1 Ramsey Road, Shirley, NY 11967, USA