

Recombinant Full Length Human KAT5 Protein, C-Flag-tagged

Cat. No. KAT5-565HFL Lot. No. (See product label)

SPECIFICATION

Product Overview	Recombinant Full Length Human KAT5 Protein, fused to Flag-tag at C-terminus, was expressed in Mammalian cells.
Species	Human
Source	Mammalian Cells
Description	The protein encoded by this gene belongs to the MYST family of histone acetyl transferases (HATs) and was originally isolated as an HIV-1 TAT-interactive protein. HATs play important roles in regulating chromatin remodeling, transcription and other nuclear processes by acetylating histone and nonhistone proteins. This protein is a histone acetylase that has a role in DNA repair and apoptosis and is thought to play an important role in signal transduction. Alternative splicing of this gene results in multiple transcript variants.
Form	25 mM Tris HCl, pH 7.3, 100 mM glycine, 10% glycerol.
Molecular Mass	58.4 kDa
AA Sequence	MAEVGEIIEGCRLPVLRRNQDNEDEWPLAEILSVKDISGRKLFYVHYIDFNKRLDEWV THERLDLKKIQF PKKEAKTPTKNGLPGSRPGSPEREVPASAQASGKTLPIPVQITLRF NLPKEREAIPEGEPDQPLSSSSCL QPNHRSTKRKVEVSPATPVPSETAPASVFPQ NGAARRAVAAQPGRKRKSNCLGTDDESDGIPSAP RMTGSLVSDRSHDDIVT RMKNIECIELGRHRLKPWYFSPYPQELTTLPLVLYLCEFCLKYGRSLKCLQRHL TKCD LRHPPGNEIYRKGITISFFEIDGRKNKSYSQNLCLLAKCFLDHKTLTYDTPFLFYVMT

 Tel: 1-631-559-9269 1-516-512-3133

 Email: info@creative-biomart.com  Fax: 1-631-938-8127

 45-1 Ramsey Road, Shirley, NY 11967, USA

EYDCKGFH IVGYFSKEKESTEDYINVACILTLPPYQRRGYGKLLIEFSYELSKVEGKT
 GTPEKPLSDLGLLSYRSYWSQ TILEILMGLKSESGERPQITINEISEITSIKKEDVISTL
 QYLNLINEYYKGQYILTSEDIVDGHARAMLK
 RLLRIDSKCLHFTPKDWSKRGKWTRTRPLEQKLISEEDLAANDILDYKDDDDKV

Purity	> 80% as determined by SDS-PAGE and Coomassie blue staining.
Stability	Stable for 12 months from the date of receipt of the product under proper storage and handling conditions. Avoid repeated freeze-thaw cycles.
Storage	Store at -80 centigrade.
Concentration	>50 ug/mL as determined by microplate BCA method.
Preparation	Recombinant protein was captured through anti-DDK affinity column followed by conventional chromatography steps.
Protein Families	Druggable Genome, Transcription Factors
Full Length	Full L.

GENE INFORMATION

Gene Name	KAT5 lysine acetyltransferase 5 [Homo sapiens (human)]
Official Symbol	KAT5
Synonyms	TIP; ESA1; PLIP; TIP60; cPLA2; HTATIP; ZC2HC5; HTATIP1; NEDFASB
Gene ID	10524

 Tel: 1-631-559-9269 1-516-512-3133

 Email: info@creative-biomart.com  Fax: 1-631-938-8127

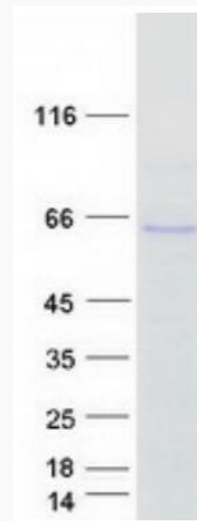
 45-1 Ramsey Road, Shirley, NY 11967, USA

mRNA Refseq [NM_006388.4](#)

Protein Refseq [NP_006379.2](#)

MIM [601409](#)

UniProt ID [Q92993](#)



Coomassie blue staining of purified KAT5 protein.

 Tel: 1-631-559-9269 1-516-512-3133

 Email: info@creative-biomart.com  Fax: 1-631-938-8127

 45-1 Ramsey Road, Shirley, NY 11967, USA