

# Recombinant Human KATNAL1 Protein, Myc/DDK-tagged, C13 and N15-labeled

**Cat. No.** KATNAL1-6018H    **Lot. No.** (See product label)

## SPECIFICATION

|                         |   |
|-------------------------|---|
| <b>Product Overview</b> | KATNAL1 MS Standard C13 and N15-labeled recombinant protein (NP_115492) with a C-terminal MYC/DDK tag, was expressed in HEK293 cells.   |
| <b>Species</b>          | Human   |
| <b>Source</b>           | HEK293  |
| <b>Description</b>      | Regulates microtubule dynamics in Sertoli cells, a process that is essential for spermiogenesis and male fertility. Severs microtubules in an ATP-dependent manner, promoting rapid reorganization of cellular microtubule arrays. Has microtubule-severing activity in vitro.  |
| <b>Molecular Mass</b>   | 55.4 kDa  |
| <b>AA Sequence</b>      | <p>MNLAEICDNAKKGREYALLGNYDSSMVYYQGVMQQIQRHCQSVRDPAIKGKWQQV<br/> RQELLEEEYEQVKSIVSTLESFKIDKPPDFPVSCQDEPFRDPAVWPPPVP AEHRAPPQ<br/> IRRPNREVRPLRKEMAGVVGARGPVGRAHPISKSEKPSTSRDKDYRARGRDDKGRK<br/> NMQDGASDGEMPKFDGAGYDKDLVEALERDIVSRNPSIHWDIADLEEAKKLLREA<br/> VVLPMWMPDFFKGIIRRPWKGVLVMPGPGTGKMLAKAVATECGTTFFNVSSSTLT<br/> SKYRGESEKLVRLLFEMARFYAPTTIFIDEIDSICSRRTSDEHEASRRVKSELLIQMD<br/> GVGGALEND DPSKMVMVLAATNFPWDIDEALRRRLEKRIYIPLPTAKGRAELLKINLR<br/> EVELDPDIQLEDIAEKIEGYSGADITNVCRDASLMAMRRRINGLSPEIRALSKEELQ<br/> MPVTKGDFELALKKIAKSVSAADLEKYEKWMVEFGSATRTRPLEQKLISEEDLAANDI</p> |

 Tel: 1-631-559-9269    1-516-512-3133

 Email: [info@creative-biomart.com](mailto:info@creative-biomart.com)     Fax: 1-631-938-8127

 45-1 Ramsey Road, Shirley, NY 11967, USA

LDYKDDDDKV

**Purity** > 80% as determined by SDS-PAGE and Coomassie blue staining

**Stability** Stable for 3 months from receipt of products under proper storage and handling conditions.

**Storage** Store at -80 centigrade. Avoid repeated freeze-thaw cycles.

**Concentration** 50 µg/mL as determined by BCA

**Storage Buffer** 100 mM glycine, 25 mM Tris-HCl, pH 7.3.

## GENE INFORMATION

**Gene Name** [KATNAL1 katanin p60 subunit A-like 1 \[ Homo sapiens \(human\) \]](#)

**Official Symbol** [KATNAL1](#)

**Synonyms** KATNAL1; katanin p60 subunit A-like 1; katanin p60 ATPase-containing subunit A-like 1; MGC2599; p60 katanin-like 1;

**Gene ID** [84056](#)

**mRNA Refseq** [NM\\_032116](#)

**Protein Refseq** [NP\\_115492](#)

**MIM** [614764](#)

**UniProt ID** [Q9BW62](#)

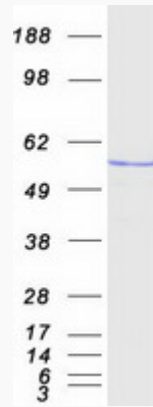
 Tel: 1-631-559-9269 1-516-512-3133

 Email: [info@creative-biomart.com](mailto:info@creative-biomart.com)  Fax: 1-631-938-8127

 45-1 Ramsey Road, Shirley, NY 11967, USA



SDS-PAGE



Tel: 1-631-559-9269 1-516-512-3133

Email: [info@creative-biomart.com](mailto:info@creative-biomart.com) Fax: 1-631-938-8127

45-1 Ramsey Road, Shirley, NY 11967, USA