

Recombinant Human KATNAL2 protein, His-tagged

Cat. No. KATNAL2-223H **Lot. No.** (See product label)

SPECIFICATION

Product Overview	Recombinant Human KATNAL2 protein(1-350 aa), fused with N-terminal His tag, was expressed in E. coli.
Species	Human
Source	E.coli
ProteinLength	1-350 aa
Form	The purified protein was Lyophilized from sterile PBS (58mM Na ₂ HPO ₄ , 17mM NaH ₂ PO ₄ , 68mM NaCl, pH7.4). 5 % trehalose and 5 % mannitol are added as protectant before lyophilization.
Storage	Short-term storage: Store at 2-8°C for (1-2 weeks). Long-term storage: Aliquot and store at -20°C to -80°C for up to 3 months, reconstitution with sterile water and addition of an equal volume of glycerol. Avoid repeat freeze-thaw cycles.
AA Sequence	MEYESYYFVKFQKYPKIVKKSSDTAENNLQPQRSGKTRRMMNDSCQNLPKINQQRPR RSKTTAGKTGDTKSLNKEHPNQEVVDNTRLENANFGLHISRIRKDSGEENAHPRRG QIIDFQGLLTDAIKGATSELALNTFDHNPDPSERLKPLSAFIGMNSEMRELAADVSR DIYLHNPNIKWNDIIGLDAKQLVKEAVVYPIRYPQLFTGILSPWKGLLLYGPPGTGKT LLAKAVATECKTTFNISASTIVSKWRGDSEKLVRVLFELARYHAPSTIFLDELESVMS QRGTASGGEHEGSLRMKTELLVQMDGLARSEDLVFVLAASNLPWELDCAMLRRLR KRILVDL

 Tel: 1-631-559-9269 1-516-512-3133

 Email: info@creative-biomart.com  Fax: 1-631-938-8127

 45-1 Ramsey Road, Shirley, NY 11967, USA

Purity 85%, by SDS-PAGE with Coomassie Brilliant Blue staining.

GENE INFORMATION

Official Symbol [KATNAL2](#)

Synonyms KATNAL2; katanin p60 subunit A-like 2; katanin p60 ATPase-containing subunit A-like 2; DKFZP667C165; MGC33211; p60 katanin-like 2; DKFZp667C165;

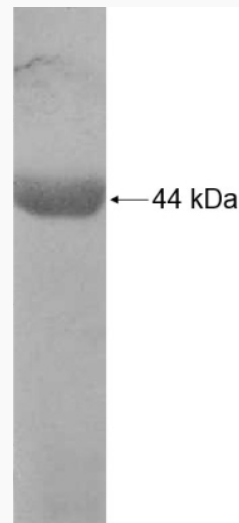
Gene ID [83473](#)

mRNA Refseq [NM_031303](#)

Protein Refseq [NP_112593](#)

UniProt ID [Q8IYT4](#)

SDS-PAGE



 Tel: 1-631-559-9269 1-516-512-3133

 Email: info@creative-biomart.com  Fax: 1-631-938-8127

 45-1 Ramsey Road, Shirley, NY 11967, USA