

Recombinant Human KATNAL2 Protein, Myc/DDK-tagged, C13 and N15-labeled

Cat. No. KATNAL2-3022H **Lot. No.** (See product label)

SPECIFICATION

Product Overview

KATNAL2 MS Standard C13 and N15-labeled recombinant protein (NP_112593) with a C-terminal MYC/DDK tag, was expressed in HEK293 cells.

Species

Human

Source

HEK293

Description

KATNAL2 (Katanin Catalytic Subunit A1 Like 2) is a Protein Coding gene. Diseases associated with KATNAL2 include Microcystic Meningioma and Cerebral Convexity Meningioma. Gene Ontology (GO) annotations related to this gene include microtubule binding and microtubule-severing ATPase activity. An important paralog of this gene is KATNA1.

Molecular Mass

52.8 kDa

AA Sequence

MEYESYYFVKFQKYPKIVKKSSDTAENNLQSRGKTRRMMNDSCQNLPKINQQRPR
 RSKTTAGKTGDTKSLNKEHPNQEVVDNTRLENANFGLHISRIRKDSGEENAHPRRG
 QIIDFQGLLTDAIKGATSELALNTFDHNPDPSERLKPLSAFIGMNSEMRELAADVSR
 DIYLHNPNIKWNDIIGLDAKQLVKEAVVYPIRYPQLFTGILSPWKGLLLYGPPGTGKT
 LLAKAVATECKTTFNISASTIVSKWRGDSEKLVVLFELARYHAPSTIFLDELESVMS
 QRG TASGGEHEGSLRMKTELLVQMDGLARSEDLVFVLAASNLPWELDCAMLRRL
 KRILVDLPSREARQAMIYHWLPPVSKSRALELHTELEYSVLSQETEGYSGSDIKLVCR
 EAAMRPVRKIFDALENHQSESSDLPRIQLDIVTTADFLDVLTHTKPSAKNLAQRYSD

 Tel: 1-631-559-9269 1-516-512-3133

 Email: info@creative-biomart.com  Fax: 1-631-938-8127

 45-1 Ramsey Road, Shirley, NY 11967, USA

WQREFESVTRTRPLEQKLISEEDLAANDILDYKDDDDKV

Purity > 80% as determined by SDS-PAGE and Coomassie blue staining

Stability Stable for 3 months from receipt of products under proper storage and handling conditions.

Storage Store at -80 centigrade. Avoid repeated freeze-thaw cycles.

Concentration 50 µg/mL as determined by BCA

Storage Buffer 100 mM glycine, 25 mM Tris-HCl, pH 7.3.

GENE INFORMATION

Gene Name [KATNAL2 katanin p60 subunit A-like 2 \[Homo sapiens \(human\) \]](#)

Official Symbol [KATNAL2](#)

Synonyms KATNAL2; katanin p60 subunit A-like 2; katanin p60 ATPase-containing subunit A-like 2; DKFZP667C165; MGC33211; p60 katanin-like 2; DKFZp667C165;

Gene ID [83473](#)

mRNA Refseq [NM_031303](#)

Protein Refseq [NP_112593](#)

MIM [614697](#)

UniProt ID [Q8IYT4](#)

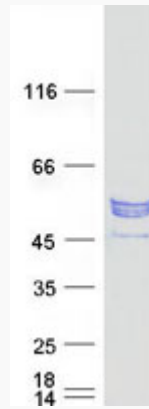
 Tel: 1-631-559-9269 1-516-512-3133

 Email: info@creative-biomart.com  Fax: 1-631-938-8127

 45-1 Ramsey Road, Shirley, NY 11967, USA



SDS-PAGE



Tel: 1-631-559-9269 1-516-512-3133

Email: info@creative-biomart.com Fax: 1-631-938-8127

45-1 Ramsey Road, Shirley, NY 11967, USA