

## Recombinant Human KBTBD10 protein, His-tagged

Cat. No. KBTBD10-2556H Lot. No. (See product label)

### SPECIFICATION

<b>Product Overview</b>	Recombinant Human KBTBD10 protein(205-382 aa), fused with N-terminal His tag, was expressed in E.coli.
<b>Species</b>	Human
<b>Source</b>	E.coli
<b>ProteinLength</b>	205-382 aa
<b>Form</b>	The purified protein was Lyophilized from sterile PBS (58mM Na <sub>2</sub> HPO <sub>4</sub> , 17mM NaH <sub>2</sub> PO <sub>4</sub> , 68mM NaCl, pH7.4). 5 % trehalose and 5 % mannitol are added as protectant before lyophilization. The elution buffer contain 300mM imidazole.
<b>AASequence</b>	RTDKENRVKNLSEVFDICIRFLMTEKYFKDHVEKDDIISNPDLQKKIKVLKDAFAGK LPEPSKNAAKTGAGEVNGDVGDEDLLPGYLNDIPRHGMFVKDLILLVNDTAAVAYDP TENECYLTALAEQIPRNHSSIVTQQNQIYVVGGLYVDEENKDQPLQSYFFQLDSIASE WVGLP
<b>Purity</b>	85%, by SDS-PAGE with Coomassie Brilliant Blue staining.
<b>Storage</b>	Store at 2-8°C for 1-2 weeks. Aliquot and store at -20°C to -80°C for up to 3 months, reconstitution with sterile water and addition of an equal volume of glycerol. Avoid repeat freeze-thaw cycles.
<b>Reconstitution</b>	Dissolve the product in 200 µl sterile water to achieve a working concentration of 0.25

 Tel: 1-631-559-9269 1-516-512-3133

 Email: [info@creative-biomart.com](mailto:info@creative-biomart.com)  Fax: 1-631-938-8127

 45-1 Ramsey Road, Shirley, NY 11967, USA

g/μl. If experimental compatibility allows, mix the aqueous solution with an equal volume of glycerol (1:1 ratio) after initial reconstitution.

## GENE INFORMATION

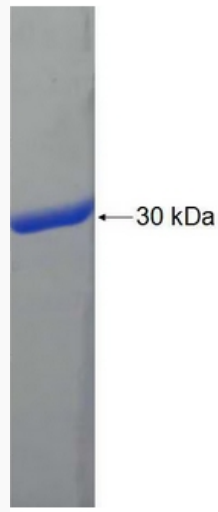
<b>Gene Name</b>	KBTBD10 kelch repeat and BTB (POZ) domain containing 10 [ Homo sapiens ]
<b>Official Symbol</b>	KBTBD10
<b>Synonyms</b>	KBTBD10; kelch repeat and BTB (POZ) domain containing 10; kelch repeat and BTB domain-containing protein 10; sarcomeric muscle protein; SARCOSIN; kel-like protein 23; kelch-related protein 1; FLJ60989;
<b>Gene ID</b>	10324
<b>mRNA Refseq</b>	NM_006063
<b>Protein Refseq</b>	NP_006054
<b>MIM</b>	607701
<b>UniProt ID</b>	O60662

 Tel: 1-631-559-9269 1-516-512-3133

 Email: [info@creative-biomart.com](mailto:info@creative-biomart.com)  Fax: 1-631-938-8127

 45-1 Ramsey Road, Shirley, NY 11967, USA

**SDS-PAGE**



 Tel: 1-631-559-9269 1-516-512-3133

 Email: [info@creative-biomart.com](mailto:info@creative-biomart.com)  Fax: 1-631-938-8127

 45-1 Ramsey Road, Shirley, NY 11967, USA