

Recombinant Human KBTBD11 Protein, Myc/DDK-tagged, C13 and N15-labeled

Cat. No. KBTBD11-1200H **Lot. No.** (See product label)

SPECIFICATION

Product Overview

KBTBD11 MS Standard C13 and N15-labeled recombinant protein (NP_055682) with a C-terminal MYC/DDK tag, was expressed in HEK293 cells.

Species

Human

Source

HEK293

Description


KBTBD11 (Kelch Repeat And BTB Domain Containing 11) is a Protein Coding gene. Diseases associated with KBTBD11 include Leukemia, Chronic Myeloid. An important paralog of this gene is KLHDC7B.

Molecular Mass

65.5 kDa

AA Sequence

MEHAVAPCVLYPGTEPGAAGESESEGAASPAQTPCSLGASLCFSSGEEESPQSLAS
AAEGAATSPSSGGPRVVERQWEAGSAGAASPEELASPEERACPEEPAAPSPEPR
VWLEDPASPEEPGEPAPVPPGFGAVYGEPLVLEVSGRRLRAHKAVLAARSDYFRA
RASRDVLRVQGVSLTALRLLLADAYSGRMAGVRPDNVAEVLVAGARRLQLPGAAQR
ATDAVGPQLSLANCYEVLSAAKRQRLNELRDAAYCFMSDHYLEVLREPAVFGRLSG
AERDLLRRRLRAGRAHLLAAALGPAGERAGSRPQSPSGDADARGDAAVYCFHAA
AGEWRELTRLPEGAPARGCGLCVLYNYLFVAGGVAPAGPDGRARPSDQVFCYNPA
TDSWSAVRPLRQARSQRLRLALDGHLYAVGGECLLSVERYDPRADRWAPVAPLPR
GAFAVAHEATTCHGEIYVSGGSLFYRLLKYDPRRDEWQECPCSSSRERSADMVAL
DGFYRFDLSGSRGEAQAAGPSGVSVSRYHCLAKQWSPCVAPLRLPGGPTGLQPF

 Tel: 1-631-559-9269 1-516-512-3133

 Email: info@creative-biomart.com  Fax: 1-631-938-8127

 45-1 Ramsey Road, Shirley, NY 11967, USA

RCAALDGAIYCVSRAGTWRFQPAREGEAGGDAGQGGGFALGAPLDVRGVLIPFA
LSLPEKPPRGEQGAPTRTRPLEQKLISEEDLAANDILDYKDDDDKV

Purity > 80% as determined by SDS-PAGE and Coomassie blue staining

Stability Stable for 3 months from receipt of products under proper storage and handling conditions.

Storage Store at -80 centigrade. Avoid repeated freeze-thaw cycles.

Concentration 50 µg/mL as determined by BCA

Storage Buffer 100 mM glycine, 25 mM Tris-HCl, pH 7.3.

GENE INFORMATION

Gene Name [KBTBD11 kelch repeat and BTB domain containing 11 \[Homo sapiens \(human\) \]](#)

Official Symbol [KBTBD11](#)

Synonyms KBTBD11; kelch repeat and BTB domain containing 11; KLHDC7C; kelch repeat and BTB domain-containing protein 11; chronic myelogenous leukemia-associated protein; kelch domain-containing protein 7B; kelch repeat and BTB (POZ) domain containing 11


Gene ID [9920](#)

mRNA Refseq [NM_014867](#)

Protein Refseq [NP_055682](#)

 Tel: 1-631-559-9269 1-516-512-3133

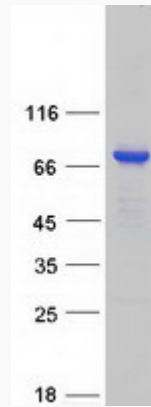
 Email: info@creative-biomart.com  Fax: 1-631-938-8127


 45-1 Ramsey Road, Shirley, NY 11967, USA

MIM 618794

UniProt ID O94819

SDS-PAGE



 Tel: 1-631-559-9269 1-516-512-3133

 Email: info@creative-biomart.com  Fax: 1-631-938-8127

 45-1 Ramsey Road, Shirley, NY 11967, USA