

Recombinant Human KBTBD12 Protein, Myc/DDK-tagged, C13 and N15-labeled

Cat. No. KBTBD12-2812H **Lot. No.** (See product label)

SPECIFICATION

Product Overview	KBTBD12 MS Standard C13 and N15-labeled recombinant protein (NP_997218) with a C-terminal MYC/DDK tag, was expressed in HEK293 cells.
Species	Human
Source	HEK293
Description	KBTBD12 (Kelch Repeat And BTB Domain Containing 12) is a Protein Coding gene. An important paralog of this gene is KLHL17.
Molecular Mass	70.9 kDa
AA Sequence	<p>MECKIEGKEYQHSLNLLNKIQNMKELAEMIDVVLTAEGEKFPCHRLVLAASFSPYFKA MFTCGLLECNQREVILYDITAESVSVLLNYMYNAALEINNANVQTVAMAAYFMQMEE VFSVCQKYMMDHMDASNCLGIYYFAKQIGAEDLSDRSKKYLYQHFAEVSLHEEILEI EVHQFLTLIKSDDLNISREESILDVLRWVNHKELRTVHVELLKQVRLELVNPSFLR QALRRNTMLLCDADCVDIIQNAFKAIKTPQQHSLNLRYGMEETSLLLCIGNNSSGIRS RHRSYGDASFCYDPVSRKTYFISSPKYGEGLGTVCTGVV MENNTIIVAGEASASKLS RQKNKNVEIYRYHDRGNQFWEKLCTAEFRELYALGSIHNDLYVIGGQM KIKNQYLIT NCVDKYSVERDNWKRVSPLPLQLACHAVVTVNNKLYVIGGWTPQMDLPDEEPDRL SNKLLQYDPSQDQWSVRAPMKYSKYRFSTAVVNSEIYVLGGIGCVGQDKGQVRKC LDVVEIYNPDGDFWREGPPMPSPLLSLRTNSTNAGAVDGLYVCGGFH GADRHEVI SKEILELDPWENQWNVVAINVLMHDSYDVCLVARMNPRDLIPPPSDLVEEGNEHTR</p>

 Tel: 1-631-559-9269 1-516-512-3133

 Email: info@creative-biomart.com  Fax: 1-631-938-8127

 45-1 Ramsey Road, Shirley, NY 11967, USA



TRPLEQKLISEEDLAANDILDYKDDDDKV

Purity > 80% as determined by SDS-PAGE and Coomassie blue staining

Stability Stable for 3 months from receipt of products under proper storage and handling conditions.

Storage Store at -80 centigrade. Avoid repeated freeze-thaw cycles.

Concentration 50 µg/mL as determined by BCA

Storage Buffer 100 mM glycine, 25 mM Tris-HCl, pH 7.3.

GENE INFORMATION

Gene Name [KBTBD12 kelch repeat and BTB domain containing 12 \[Homo sapiens \(human\) \]](#)

Official Symbol [KBTBD12](#)

Synonyms KBTBD12; kelch repeat and BTB (POZ) domain containing 12; kelch domain containing 6, KLHDC6; kelch repeat and BTB domain-containing protein 12; FLJ46299; kelch domain containing 6; kelch domain-containing protein 6; KLHDC6; DKFZp779E2271;

Gene ID [166348](#)

mRNA Refseq [NM_207335](#)

Protein Refseq [NP_997218](#)

UniProt ID [Q3ZCT8](#)

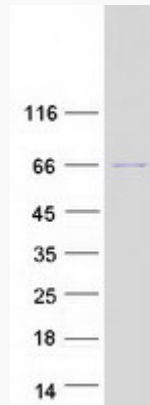
Tel: 1-631-559-9269 1-516-512-3133

Email: info@creative-biomart.com Fax: 1-631-938-8127

45-1 Ramsey Road, Shirley, NY 11967, USA



SDS-PAGE



Tel: 1-631-559-9269 1-516-512-3133

Email: info@creative-biomart.com Fax: 1-631-938-8127

45-1 Ramsey Road, Shirley, NY 11967, USA