

Recombinant Human KBTBD6 Protein, Myc/DDK-tagged, C13 and N15-labeled

Cat. No. KBTBD6-4508H **Lot. No.** (See product label)

SPECIFICATION

Product Overview	KBTBD6 MS Standard C13 and N15-labeled recombinant protein (NP_690867) with a C-terminal MYC/DDK tag, was expressed in HEK293 cells.
Species	Human
Source	HEK293
Description	KBTBD6 (Kelch Repeat And BTB Domain Containing 6) is a Protein Coding gene. Among its related pathways are Innate Immune System and Class I MHC mediated antigen processing and presentation. An important paralog of this gene is KBTBD7.
Molecular Mass	76.1 kDa
AA Sequence	<p>MQSREDAPRSRRLASPRGGKRPKKIHKPTVSAFFTGPEELKDTAHSALLAQLKSFY DARLLCDVTIEVVTPGSGPGTGRLFPCNRNVLAAACPYFKSMFTGGMYESQQASVT MHDVDAESFEVLVDYCYTGRVSLSEANVERLYAASDMLQLEYVREACASFLARRLD LTNCTAILKFADAFGHRKLRSAQSYIAQNFKQLSHMGSIREE TLADTLAQLLAVLR LDSL DVESEQTVCHVAVQWLEAAPKERGPSAAEVFKCVRWMHFTEEDQDYLEGLL TKPIVKKYCLDVIEGALQMRYGDLLYKSLVPVNSSSSSSSSNSLVSA AENPPQRLG MCAKEMVIFFGHPRDPFLCCDPYSGDLYKVPSP L TCLAHTRTVTTLAVCISPDHDIYL AAQPR TDLWVYKPAQNSWQQLADRLLCREGMDVAYLNGYIYLGG RDPITGVKLKE VECYNVKRNQWALVAPLPHSFLSFDLMVIRDYLYALNSKRMFCYDPSHNMWLKCVS LKRND FQEACVFNEE IY C ICDIPVMKVYNPVRAEWRQMNNIPLVSETNNYRIIKHGQK</p>

 Tel: 1-631-559-9269 1-516-512-3133

 Email: info@creative-biomart.com  Fax: 1-631-938-8127

 45-1 Ramsey Road, Shirley, NY 11967, USA

LLLITSRTPQWKKNRVTVYEYDIRGDQWINIGTTLGLLQFDSNFFCLSARVYPSCLEP
 GQSFLTEEEEIPSESSTEWDLGGFSEPDSESGSSSSLSDDDFWVRVAPQTRTRPLE
 QKLISEEDLAANDILDYKDDDDKV

Purity > 80% as determined by SDS-PAGE and Coomassie blue staining

Stability Stable for 3 months from receipt of products under proper storage and handling conditions.

Storage Store at -80 centigrade. Avoid repeated freeze-thaw cycles.

Concentration 50 µg/mL as determined by BCA

Storage Buffer 100 mM glycine, 25 mM Tris-HCl, pH 7.3.

GENE INFORMATION

Gene Name [KBTBD6 kelch repeat and BTB domain containing 6 \[Homo sapiens \(human\) \]](#)

Official Symbol [KBTBD6](#)

Synonyms KBTBD6; kelch repeat and BTB domain containing 6; kelch repeat and BTB domain-containing protein 6; kelch repeat and BTB (POZ) domain containing 6

Gene ID [89890](#)

mRNA Refseq [NM_152903](#)

Protein Refseq [NP_690867](#)

MIM [617738](#)

 Tel: 1-631-559-9269 1-516-512-3133

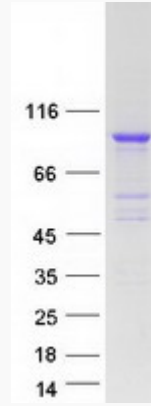
 Email: info@creative-biomart.com  Fax: 1-631-938-8127

 45-1 Ramsey Road, Shirley, NY 11967, USA

UniProt ID

Q86V97

SDS-PAGE



 Tel: 1-631-559-9269 1-516-512-3133

 Email: info@creative-biomart.com  Fax: 1-631-938-8127

 45-1 Ramsey Road, Shirley, NY 11967, USA